

## Supplemental Data

### Comparative Analysis of Argonaute-Dependent Small RNA Pathways in *Drosophila*

Rui Zhou, Ikuko Hotta, Ahmet M. Denli, Pengyu Hong, Norbert Perrimon, and Gregory J. Hannon

#### Supplemental Experimental Procedures

##### DNA constructs

A 688-bp DNA fragment was PCR-amplified from a *Renilla* luciferase cDNA and cloned into pWIZ using compatible XbaI/AvrII sites to generate pWIZ-*Renilla*-Reverse. Subsequently, an XbaI/T4/EcoRI fragment from pWIZ-*Renilla*-Reverse was cloned into pRmHa-3 using BamHI/T4/EcoRI sites to generate pRmHa-3-*Renilla*-Reverse. Finally, the same *Renilla* PCR product was cloned into pRmHa-3-*Renilla*-Reverse using compatible XbaI/NheI sites to generate pRmHa-3-*Renilla*-hairpin. A Sall/BglII fragment from pGL3-Basic (Promega) was cloned to pRmHa-3 using Sall/BamHI sites to generate pRmHa-3-Firefly-long. A DNA fragment containing the coding region of the *Renilla* luciferase gene was amplified by PCR and cloned into pRmHa-3 using BamHI/EcoRI sites to generate pRmHa-3-*Renilla*. A pair of oligos containing two perfect binding sites for esi-2.1 were annealed and cloned into pRmHa-3-*Renilla* using BamHI/Sall sites to generate sensor constructs for esi-2.1.

The pMT-D05 construct carries a DNA fragment derived from a modified short pri-Bantam (pri-banCX) where the secondary structure remains the same as pri-Bantam except that the stem sequence has been modified to generate CXCR4. The pri-banCX fragment was amplified by PCR from a template made by ligation of synthesized DNA fragments, and cloned into pMT (Invitrogen) using EcoRI and XhoI restriction sites. The pMT-F12 construct was generated using a similar strategy except that the CXCR4 region in the pri-banCX is perfectly base-paired.

Template sequence for pMT-D05:

```
CGCTCAGATGCAGATGTTGTTGATGTTATAAAGACCACGATCGAAAGAGGA
AAAACGGAAAACGAACGAAAAGCGTTTGTAACTCCAATGATTTGACTACGAG
ACGTTTTTCACTCGTGCTAACTACTGTTTTTTCATACAAGTTGTTAGCTGGAGTG
AAAAC TTCTTGTC AATGAATACCACATTCCACATTCCGATGGTTCGATTTTTGT
TGTTTGGTGTGCCTACACAGATATAGCGATATCGTGTAACAAAGCTTTGAAC
TTATGCCGACCGATC
```

Template sequence for pMT-F12:

```
CGCTCAGATGCAGATGTTGTTGATGTTATAAAGACCACGATCGAAAGAGGA
AAAACGGAAAACGAACGAAAAGCGTTTGTA ACTCCAATGATTTGACTACGAG
AAGTTTTCACTCCAGCTAACA ACTGTTTTTCATACAAGTTGTTAGCTGGAGTG
AAA ACTTCTTGTC AATGAATACCACATTCCACATTCCGATGGTTCGATTTTTGT
TGTTTGGTGTGCCTACACAGATATAGCGATATCGTGTAACAAAGCTTTGAAC
TTATGCCGACCGATC
```

Cloning Primers:

Bantam-CXCR4 EcoRI fwd

```
TTCACGTGAATTC CGCTCAGATGCAGATGTTGTTGATG
```

Bantam-CXCR4 XhoI rev

```
TTCACGTCTCGAG GATCGGTCGGCATAAGTTCAAAGCTTTG
```

The *Renilla* luciferase reporter construct carrying CXCR4 target sites (pMT-*Renilla*-CXCR4-6B) was subcloned from the RL-CXCR-6-bulge reporter plasmid (Doench et al, 2004) into pMT using EcoRI and XhoI sites.

## RNAi screening

The screens were performed in 384-well plates. To screen for components of the siRNA pathway, 10  $\mu$ L of RZ-14 cells (suspended in serum-free Schneider's medium at a density of  $2 \times 10^6$  cells/mL) were dispensed to each well containing 5  $\mu$ L dsRNA (~150-250 ng in total), incubated at room temperature for 45 minutes, then supplemented with 30  $\mu$ L growth medium containing FBS. Three days after dsRNA treatment, cells were induced with 25  $\mu$ M CuSO<sub>4</sub> and luciferase assays were performed another two days later using Dual-Glo luciferase reagents (Promega). To screen for components of the miRNA pathway, a transient transfection approach was employed. Approximately 100 ng plasmid DNA (a mixture of 5 ng pMT-*Renilla*-CXCR4-6B, 93 ng pMT-D05 and 2 ng pRmHa-3-Firefly-long) was mixed with 0.8  $\mu$ l Enhancer in 15  $\mu$ l EC (Qiagen) and incubated at room temperature for 5 minutes. Then 0.35  $\mu$ l of Effectene reagent was added and the mixture was immediately dispensed into each well containing ~80-120 ng of dsRNAs. After incubation at room temperature for 10 minutes, 40  $\mu$ l S2-NP cells ( $10^6$  cells/mL) were added to each well. Cells were induced with 200 mM CuSO<sub>4</sub> 3 days after transfection, and luciferase assays were performed 24 hours later. For each well, the ratio of *Renilla* luciferase to firefly luciferase, referred to as relative luciferase unit (RLU), was calculated. For each individual plate, the mean RLU (RLU<sub>mean</sub>) was calculated, and each well received a score based on the ratio of RLU<sub>sample</sub>/RLU<sub>mean</sub>. For the siRNA pathway primary screen, cutoff values of 1.5/0.6 were used to select candidates, whereas cutoff values of 1.6/0.6 were used for the miRNA pathway primary screen. For the secondary screen, candidate dsRNAs were re-synthesized using the MegaScript kit (Ambion) and arrayed in 384-well plates. Each assay plate also contains 24-48 wells containing *LacZ* dsRNAs as controls. The plates were

subsequently assayed in 3 to 4 independent experiments using the corresponding siRNA/miRNA assay systems. Each sample was assigned a score as fold change in RLU relative to the average of RLUs derived from the control samples (cells treated with dsRNA against LacZ). The cutoff values for the secondary screens were 1.2/0.8 for the siRNA pathway screen, and 1.4/0.75 for the miRNA pathway screen, respectively. To minimize potential off-target effects associated with long dsRNAs, for candidate dsRNAs that scored in the secondary screen, one or more additional independent dsRNAs were synthesized and tested in a similar setting. Only genes represented by two or more independent consistently scoring dsRNAs were selected as final candidates.

To screen for dsRNAs that impacted the endogenous siRNA pathway, a sensor construct for esi-2.1 was employed to screen the composite collection of candidate dsRNAs emerging from the siRNA and miRNA primary screens. The experimental setting was the same as described in the miRNA primary screen except that a mixture of 98 ng pRmHa-3-*Renilla*-esi-2.1-sensor and 2 ng pRmHa-3-Firefly-long was transfected into each well. The cutoff values for the endo-siRNA pathway screen were 1.2/0.8.

### **Bioinformatic analysis of the screening results**

To generate Figure 1C, the average fold change in reporter activity for multiple independent dsRNAs targeting the same gene was calculated, and the reciprocals of the average fold change in reporter activity were  $\log_2$  transformed. The resulting values reflect the relative activities of each small RNA pathway in a given sample. The values were subjected to Hierarchical clustering (average linkage analysis) using the Cluster software. As for Figure 2A, the miRNA pathway activity (determined by the procedure described above) associated with selected dsRNAs targeting a given gene, the relative CXCR4 and miR-2b RNA levels (as an average from 2 to 4 independent Northern blotting experiments), and the relative levels of mature and pri-CXCR4 (from 3 independent q-PCR experiments) were subject to Hierarchical clustering. The resulting image was re-arranged to generate the final figure. Similar procedure was followed to generate Figure 2B.

**References**

Doench, J. G., Petersen, C. P., and Sharp, P. A. (2003). siRNAs can function as miRNAs. *Genes Dev* 17, 438-442.

## Supplemental Figure Legends:

### Figure S1. Assay Systems for Monitoring the siRNA, miRNA, and Endo-siRNA Pathways in Cultured *Drosophila* Cells

(A) Schematic representation of the RNAi pathway reporter system (RZ-14 cells) in which a perfectly complementary hairpin induces *Renilla* luciferase silencing. (B) Schematic representation of the miRNA pathway reporter system. An artificial miRNA (CXCR4) embedded in pri-Bantam silences a *Renilla* luciferase transcript carrying multiple imperfect CXCR4-binding sites in the 3' UTR. (C) RZ-14 cells were treated with indicated dsRNAs by soaking, and gene expression was induced with CuSO<sub>4</sub> 3 days after dsRNA treatment. Luciferase activity was measured after another 48 hours. The ratio of *Renilla* luciferase/Firefly luciferase (Relative Luciferase Unit, or RLU) was calculated and normalized against RLU from cells treated with dsRNA against *LacZ*. Error bars represent standard deviation (n≥4). (D) S2-NP cells were transfected with the CXCR4 miRNA expression vector and reporter plasmids together with various dsRNAs, and treated with CuSO<sub>4</sub> 3 days after transfection to induce transgene expression. Luciferase assays were conducted after another 24 hours and analyzed and plotted as described in C. (E) Schematic representation of the endo-siRNA pathway reporter system. An endogenous siRNA (esi-2.1) silences a *Renilla* luciferase transcript carrying two perfect esi-2.1-binding sites in the 3' UTR.

### Figure S2. Knockdown of Bel Does Not Affect Steady-State Levels of esi-2.1

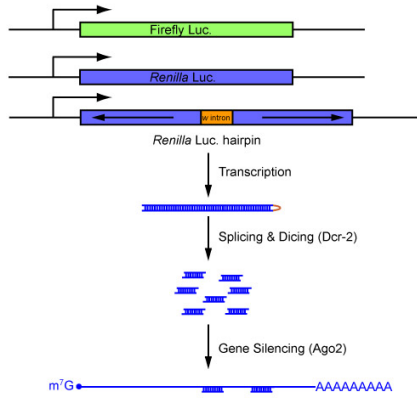
S2-NP cells were treated with various dsRNAs (as labeled on top of the panel). Total RNAs were extracted and subjected to Northern blotting analysis using probes against Bantam and esi-2.1. 2S RNA serves as loading control.

### Figure S3. Knockdown of Bel Does Not Affect Levels of Ago2-Bound esi-2.1

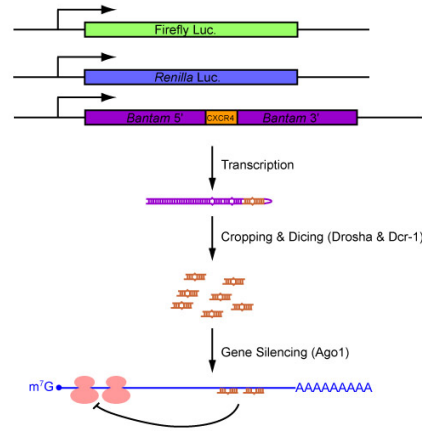
(A) S2-NP cells were first transfected with an expression construct for FLAG-tagged Ago2, then treated with various dsRNAs (as labeled on top of the panel). Cells were harvested and cell lysates were prepared. Approximately the same amount of total cell lysates were subjected to immunoprecipitation using anti-FLAG agarose beads. Total RNAs were subsequently extracted from the immunoprecipitates and subjected to Northern blotting analysis using a probe against esi-2.1. RNAs purified from an equivalent of ~25% of the cell lysates employed in the immunoprecipitation experiment were processed in parallel to serve as control for input material. (B) Approximately 1% of the input cell lysates and 5% of the immunoprecipitates were subjected to anti-FLAG immunoblotting to show the relative amount of the input material, and the membrane carrying cell lysates was re-probed with the Bel antibody to show effective knockdown.

# Supplementary Figure 1

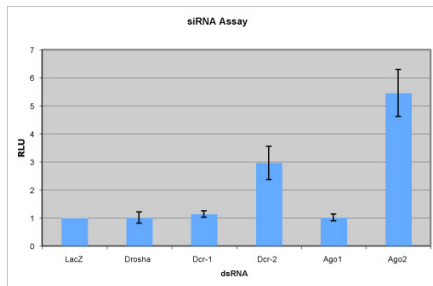
**A**



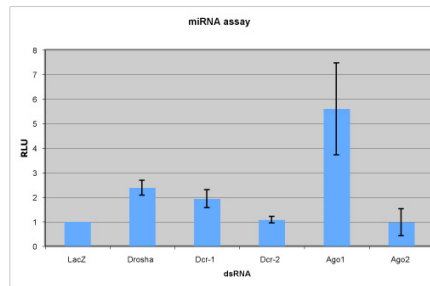
**B**



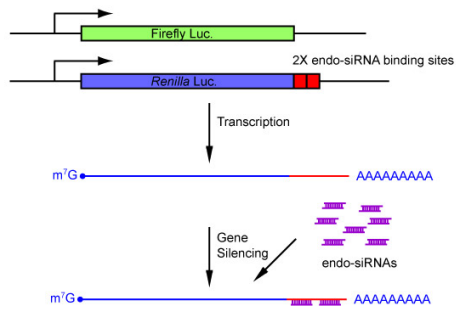
**C**



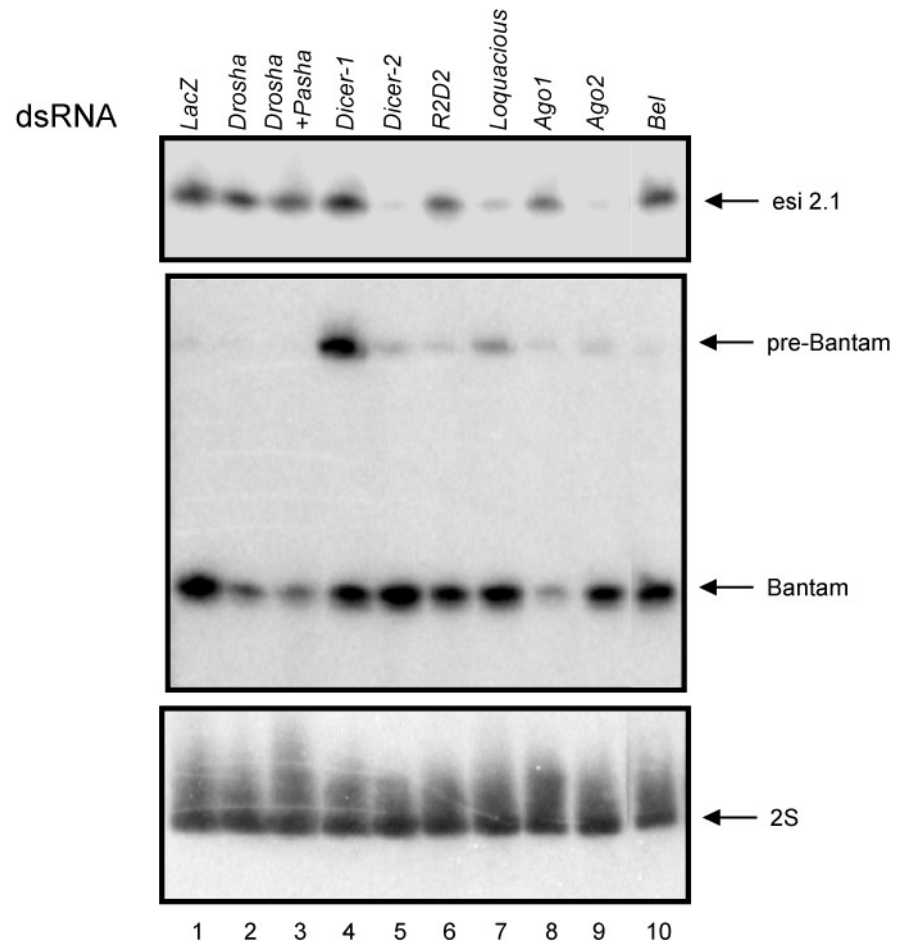
**D**



**E**

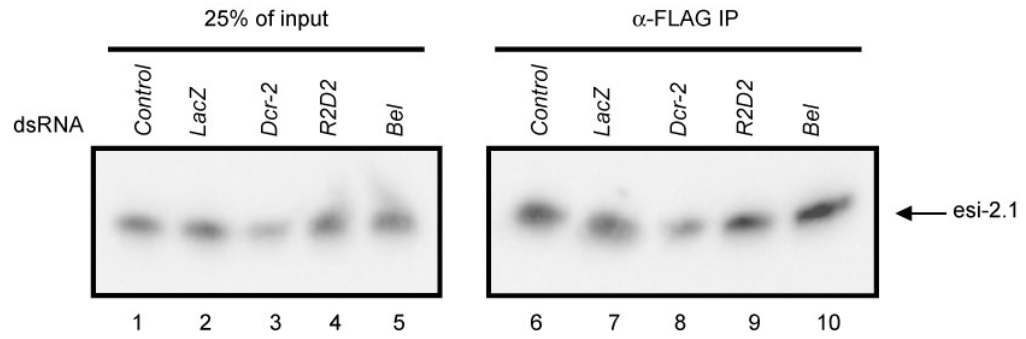


# Supplementary Figure 2



# Supplementary Figure 3

## A



## B

