

FlyPrimerBank: An Online Database for *Drosophila melanogaster* Gene Expression Analysis and Knockdown Evaluation of RNAi Reagents

Yanhui Hu^{*,§,**}, Richelle Sopko^{***}, Marianna Foos^{*}, Colleen Kelley^{*}, Ian Flockhart^{*,§}, Noemie Ammeux^{*}, Xiaowei Wang[†], Elizabeth Perkins^{*,§}, Norbert Perrimon^{*,‡}, Stephanie E. Mohr^{*,§}

^{*} Department of Genetics, Harvard Medical School, 77 Avenue Louis Pasteur, Boston, MA 02115, USA

[§] *Drosophila* RNAi Screening Center, Department of Genetics, Harvard Medical School, 77 Avenue Louis Pasteur, Boston, MA 02115, USA

[†] Departments of Radiation Oncology, Washington University School of Medicine, St. Louis, MO 63108, USA

[‡] Howard Hughes Medical Institute, 77 Avenue Louis Pasteur, Boston, MA 02115, USA

^{**} Authors contributed equally to this work

Running title: FlyPrimerBank for *Drosophila* gene expression analysis and RNAi knockdown evaluation

Key words: *Drosophila*, real time PCR, gene expression, RNAi, knockdown evaluation

Corresponding author:

Stephanie Mohr

New Research Building Room 336

77 Avenue Louis Pasteur

Boston, MA 02115

Email: smohr@hms.harvard.edu

Phone: (617)432-5626

Abstract

The evaluation of specific endogenous transcript levels is important for understanding transcriptional regulation. More specifically, it is useful for independent confirmation of results obtained using microarray analysis or RNA-seq, and for evaluating RNAi-mediated gene knockdown. Designing specific and effective primers for high-quality, moderate-throughput evaluation of transcript levels, *i.e.* quantitative real time PCR (qPCR), is nontrivial. To meet community needs, pre-defined qPCR primer pairs for mammalian genes have been designed and sequences made available, *e.g.* via PrimerBank. In this work, we adapted and refined the algorithms used for the mammalian PrimerBank to design 45417 primer pairs for 13860 *Drosophila melanogaster* genes, with three or more primer pairs per gene. We experimentally validated primer pairs for ~300 randomly selected genes expressed in early *Drosophila* embryos, using SYBR Green-based qPCR and sequence analysis of products derived from conventional PCR. All relevant information, including primer sequences, isoform specificity, spatial transcript targeting, and any available validation results and/or user feedback, is available from an online database (www.flyrnai.org/flyprimerbank). At FlyPrimerBank, researchers can retrieve primer information for fly genes either one gene at a time or in batch mode. Importantly, we included the overlap of each predicted amplified sequence with RNAi reagents from several public resources, making it possible for researchers to choose primers suitable for knockdown evaluation of RNAi reagents (*i.e.* to avoid amplification of the RNAi reagent itself). We demonstrate the utility of this resource for validation of RNAi reagents *in vivo*.

Introduction

Quantitative real-time PCR (qPCR) is widely used for analysis of transcript levels because it is sensitive, accurate, relatively easy to perform, and can be adapted to moderately high-throughput modes. qPCR has become important for the study of transcriptional regulation, for example to detect changes in specific transcript levels following treatment with different stimuli. In particular, qPCR is commonly used to confirm results obtained using microarray analysis, methods enabling the detection and quantitation of multiple RNAs such as Nanostring (GEISS *et al.* 2008) and Luminex (PECK *et al.* 2006), or RNA-seq, as well as to evaluate the knockdown efficiency of RNAi reagents. One barrier to performing qPCR assays efficiently is that the design of oligonucleotide primers for qPCR is not as straightforward as the design of primers for conventional PCR or sequencing, as qPCR is much more sensitive to non-specific amplification (WANG and SEED 2003). Several tools and resources have been developed to assist people in designing qPCR primers, including qPrimerDepot, PrimerBank and RTPrimerDB (CUI *et al.* 2007; LEFEVER *et al.* 2009; PATTYN *et al.* 2006; PATTYN *et al.* 2003; SPANDIDOS *et al.* 2010; WANG and SEED 2003; WANG *et al.* 2012). qPrimerDepot provides qPCR primer sequences for 99.96% of human RefSeq sequences (CUI *et al.* 2007) and PrimerBank is an online genome-scale primer resource for human and mouse genes (SPANDIDOS *et al.* 2010; WANG and SEED 2003; WANG *et al.* 2012). RTPrimerDB is a collection of 8609 experimentally validated qPCR primer sequences from the scientific community for 27 different species but currently only 5 primer pairs in RTPrimerDB target *Drosophila* genes (LEFEVER *et al.* 2009; PATTYN *et al.* 2006; PATTYN *et al.* 2003). Relevant to our goals, none of these resources provides comprehensive coverage of *Drosophila* genes.

RNAi is a widely adopted experimental tool for loss-of-function studies. Unlike the siRNA reagents used in mammalian systems, long double-stranded RNA (dsRNA) sequences of approximately 200-500 bps are common in reagent libraries for *Drosophila* cell-based RNAi. For *Drosophila in vivo* studies, RNAi reagents are generally either long dsRNA hairpins (usually between 200-500 bps) with gene fragments cloned by PCR as inverted repeats, or short hairpins (shRNAs) of 19-21 bps generated from oligonucleotides (CLEMENS *et al.* 2000; HAMMOND *et al.* 2000). Genome-scale RNAi reagents targeting *Drosophila* genes have been made available by several independent groups (DIETZL *et al.* 2007; FLOCKHART *et al.* 2011; HORN *et al.* 2010; NI *et al.* 2009; NI *et al.* 2011; PERRIMON *et al.* 2010; YAMAMOTO 2010). Studies using RNAi reagents in cultured cells, as well as *in vivo* in *Drosophila*, have made contributions to a number of areas of

study, and qPCR analysis is a common method used to assess the level of target gene knockdown. To accurately assess dsRNA-mediated knockdown, qPCR primer pairs must not amplify regions that are also part of the reagent sequence; otherwise, the primers might amplify the RNAi reagent itself. This is not a concern for shRNA reagents, which are generally too small to be amplified by qPCR primers.

Thus, although several qPCR primer design tools are available, there remains a need for a comprehensive and quality-analyzed set of primers useful for *Drosophila*, including for the analysis of RNAi-mediated knockdown. To address this need, we implemented the PrimerBank algorithm for *Drosophila* genes and designed three or more primer pairs for each *Drosophila* protein-coding gene. We supplemented the resource using an alternative algorithm with additional primer pairs for genes for which the PrimerBank design algorithm generated fewer than 3 primer pairs per gene. Following primer design, we systematically evaluated the overlap of each primer with long dsRNA reagents for *Drosophila* genes from publicly available sources. A subset of the FlyPrimerBank primers were experimentally evaluated using SYBR Green-based thermal analysis as well as gel electrophoresis and sequencing of PCR products after conventional PCR with 326 randomly selected *Drosophila-specific* primer pairs. In addition, we assessed primers in two additional test cases. One was the evaluation of a collection of transgenic fly lines bearing shRNAs for RNAi to knock down protein kinases and phosphatases. The other was the stimulation of the JNK pathway in *Drosophila* S2 cells. Finally, we have made FlyPrimerBank available online, including an option for user input and feedback, making FlyPrimerBank a useful community resource that can further improve over time.

Results

Primer design and annotation

Quantitative real time PCR (qPCR) has become commonplace for transcript abundance analysis. Typical applications involve monitoring the amplification products indirectly, such as by measuring binding-dependent fluorescence of specific dyes (e.g. SYBR Green). The technique, however, is vulnerable to non-desirable side products such as primer dimers or mis-priming to non-target sites, a significant concern when a sample contains thousands of transcripts. Most existing primer design programs are predicted based solely on the target sequence. By contrast, the PrimerBank algorithm takes into account the complexity of entire transcriptomes and applies stringent primer cross-reactivity filters in addition to running BLAST (WANG and SEED 2003). The algorithm used for PrimerBank primer design was proven optimal for real time PCR analysis of gene expression, and primers were experimentally evaluated. It was shown to achieve 94% success in terms of gene amplification specificity as assessed by thermal analysis and approximately 82% confirmed with respect to DNA sequence identity, assessed by sequencing PCR products following gel electrophoresis (SPANDIDOS *et al.* 2010; WANG and SEED 2003; WANG *et al.* 2012). Thus, to begin to create a comprehensive qPCR primer resource for *Drosophila*, we first chose to use the PrimerBank algorithm to design up to three primer pairs targeting the coding sequence (CDS) region for all *Drosophila* protein-coding genes (FlyBase release 5.44). By design, all of these primer sets are predicted to be gene-specific and isoform non-specific. Our decision to target CDS regions is based on the observation that annotations of un-translated regions (UTRs) change much more frequently than CDS regions. We compared transcript annotations from FlyBase release 5.34 (Feb 18th, 2011) with those from FlyBase release 5.44 (March 2nd, 2012). We found that 833 transcripts were removed, 3407 new transcripts were added, and 2917 transcripts have different sequences. The sequence changes of the 2917 transcripts occurred only in the UTR regions (HU *et al.* 2013).

Using the PrimerBank algorithm, three primer pairs were successfully designed for 11,688 fly protein-coding genes. Primers were selected based on stringent criteria, in particular with regard to the sequence specificity check step (details described in Wang and Seed 2003). A total of 574 genes failed the design process completely and 1647 genes are covered with only 1 or 2 primer pairs. To increase primer coverage, we implemented an alternative algorithm for these genes using Primer3 for primer design. Common exon-exon junction regions, as well as common exons shared by all isoforms, were extracted from FlyBase release files (r5.44) and

used as the input for Primer3. For a small number of genes, no common region(s) could be identified. We therefore repeated the process, removing one isoform at a time, to identify common region(s) among the remaining isoforms. We make note of these exceptional cases and users are alerted when these genes are queried on the website. The primers designed using Primer3 were ranked based on predicted gene specificity and assessed using the NCBI Basic Local Alignment Search Tool (BLAST), searching *Drosophila* transcriptome and genome sequences. The top three designs were selected to supplement the database (Fig. 1). By implementing the alternative algorithm Primer3, which is less stringent than PrimerBank in terms of primer specificity as well as coverage for all gene specific isoforms, we were able to design at least 3 pairs of primers for each *Drosophila* protein-coding gene.

In total, FlyPrimerBank contains 45158 pre-designed primer pairs for 13860 *Drosophila* genes with at least 3 primer pairs per gene (Table 1). In total, 37647 primer pairs were designed using PrimerBank and 7511 primer pairs were designed using the alternative approach. 44951 primer pairs (99.5%) are predicted to be gene specific and isoform non-specific, whereas 207 primer pairs (0.5%) are predicted to amplify most but not all isoforms. In addition, 10635 primer pairs (24%) are exon-junction spanning whereas 34523 primer pairs (76%) amplify regions within exons. The average predicted PCR product is between 50-250 bps and the average theoretical melting temperature for any primer pair is approximately 60°C. Following primer design, we systematically evaluated the overlap of each primer with publicly available dsRNA reagents, which include the genome-wide dsRNA amplicon library for cell-based studies from the *Drosophila* RNAi Screening Center at Harvard Medical School (DRSC), as well as long dsRNA hairpins in transgenic fly stocks from National Institute of Genetics at Japan (NIG-FLY), Vienna *Drosophila* RNAi Center (VDRC) and Transgenic RNAi Project of Harvard Medical School (TRiP) (DIETZL *et al.* 2007; FLOCKHART *et al.* 2011; MOHR *et al.* 2010; NI *et al.* 2009; NI *et al.* 2011; YAMAMOTO 2010). Annotation of the overlap with RNAi reagents will help scientists choose primer pairs that avoid the reagent itself, making them suitable for confirmation of RNAi-based knockdown (Table 1).

Evaluation of FlyPrimerBank

We established a primer-testing pipeline using cDNA isolated from early *Drosophila* embryos in compliance with the "Minimum Information for the publication of real-time Quantitative PCR Experiments" (MIQE) guidelines (BUSTIN *et al.* 2009). Primers were tested by

thermal analysis using SYBR Green-based qPCR as well as by size analysis using gel electrophoresis and sequencing after conventional PCR. To generate the cDNA template, embryos (0-4 hr) were collected and RNA was extracted, enriching for RNAs larger than 200 bps. Purified RNA was treated with DNase and subsequently used for in vitro transcription to generate a cDNA library. cDNA was then serially diluted four times, starting with 1 ug of cDNA and decreasing the concentration with each dilution by a factor of four. R-squared values and primer efficiencies were calculated using Bio-Rad CFX Manager based on the results of a two-step qPCR program. Using preliminary data, we established acceptance criteria for assay performance (Fig. 2), which included 90-120% PCR amplification efficiency, linear regression with R-squared values >0.995, and the following three visual features of amplification/melting calibration curves: 1) dilution curves are evenly distributed with two cycles separating each, indicative of a linear dynamic range; 2) the curve corresponding to the most diluted sample crosses a single threshold before cycle 30 and is at least 5 cycles away from a no template control (reaction mix and primers with no cDNA template); and 3) a single unique and sharp melting peak is observed (Supplemental Fig. 1).

To establish a test set of genes, we considered genes for which there is evidence of expression in early embryos based on RNA-seq data (GRAVELEY *et al.* 2011). To first determine a cutoff for “expressed” genes, we chose six genes of varied expression with RPKM (Reads Per Kilobase per Million mapped reads) values between 0 and 7 in 0-2 and 2-4 hr embryonic RNA-Seq datasets. Primer testing indicated that transcripts with RPKM values above 3 at any of the two time points were suitable for qPCR-based gene expression analysis (Supplemental Fig. 2). We next randomly selected one FlyPrimerBank primer pair for each of 326 randomly selected genes expressed in 0-4 hr old *Drosophila* embryos, based on the above criteria, for experimental qPCR primer testing. Our thermal analysis using cDNA isolated from 0-4 hr old *Drosophila* embryos revealed that 86% of the primer pairs tested met our acceptance criteria (Supplemental table 1).

We additionally performed conventional PCR using the same cDNA as the template and separated the PCR products on an agarose gel to assess if single bands of the expected size were generated. All of the primer pairs in the 326-gene evaluation set generated PCR products with correct sizes as judged by gel electrophoresis. Additionally, PCR products from conventional PCR were purified and sequenced using independently designed sequencing primers downstream of the forward qPCR primers (Fig. 2). The sequencing validation rate varied from 71% to 98% and

was highly correlated with the size of the PCR product (Supplemental Fig. 3). For example, 98% of PCR products longer than 150 bp were validated and 80% of PCR products longer than 100 bp were validated. We suspect that the majority of sequence validation failures were due to a technical limitation, i.e. the difficulty of directly sequencing small PCR products based on the observation that low quality reads were generated even after we optimized the PCR product purification step and repeated the sequencing a number of times.

We next asked if primer failure correlated with any features of the PCR amplified regions. We found enrichment among 'failed' primers for primers that span exon:exon junctions where the spliced intron is small (Fig. 3). In addition, with a bigger dataset that includes results from additional studies (R. Sopko, personal communication), we found that primers corresponding to genes expressed at low levels as well as genes that are 'poorly' understood (i.e. genes associated with smaller numbers of gene ontology (GO) terms or publications) are more likely to fail than the primers targeting the genes expressed at high levels and/or relatively well-studied genes (i.e. genes with more GO terms and publications).

Applications of FlyPrimerBank

Assessing gene knockdown efficiency in vivo

We next evaluated the utility of primers in FlyPrimerBank to assess knockdown in transgenic fly lines bearing shRNAs targeting embryonic *Drosophila* protein kinases and phosphatases (KPs). We first assembled a target list of KP genes. A few studies have been performed to identify *Drosophila* KPs on a genome-wide level using sequence comparison-based algorithms (MANNING *et al.* 2002; MORRISON *et al.* 2000). To supplement the gene list from these publications, we mined *Drosophila* structural and functional gene annotations from public databases. Additionally, we mapped human KP genes to fly genes using DIOPT, an ortholog prediction tool (HU *et al.* 2011). The assembled KP list contains 268 kinase and 112 phosphatases (Supplemental table 2). Based on modEncode RNA-seq analysis (GRAVELEY *et al.* 2011), we selected 474 TRiP fly stocks bearing shRNAs targeting 344 KPs that are expressed (FPKM > 3) in early *Drosophila* embryos for knockdown assessment. To measure transcripts in early embryos (0-4 hr) expressing a unique KP-targeting shRNA as compared to embryos expressing a control shRNA targeting EGFP, we established a medium-throughput pipeline again compliant with the MIQE guidelines (BUSTIN *et al.* 2009). For 27 lines, we assessed transcript levels using two different primer pairs. Linear regression of knockdown levels of this subset generated an R-

squared value of 0.8 (Pearson correlation co-efficiency was 0.9) (Fig. 4), indicating that primers of independent designs led to similar conclusions regarding the level of knockdown. Furthermore, our analysis revealed that 60% of the transgenic lines tested achieved 60% or more down-regulation of their intended target transcript(s). Moreover, we found that in nearly all cases for which the shRNA was associated with an embryonic phenotype, we measured more than 60% knockdown of the intended transcript (Sopko et al. manuscript in preparation), further substantiating our primer design and qPCR testing approach. The lines that failed to achieve 60% knockdown are highly enriched for shRNAs targeting UTR regions (p value = 0.004), likely reflecting inaccuracies in UTR annotation (Hu et al. manuscript in press).

Assessing transcriptional responses in cultured cells

We used primers in FlyPrimerBank to monitor activation of the Jun N-terminal kinase (JNK) signaling pathway (Fig. 5). Activation of the JNK pathway has been extensively studied in *Drosophila* cell culture (BOND *et al.* 2008; PARK *et al.* 2004; PEREIRA *et al.* 2011; STRONACH 2005). Various endogenous or immune stimuli can activate the pathway, including lipopolysaccharides (LPS), components of the cell wall of gram-negative bacteria. The *puckered* (*puc*) gene is a direct target of the JNK pathway and transcriptional up-regulation of *puc* is commonly used as a reporter of JNK activation. We assessed JNK pathway stimulation in *Drosophila* S2 cells by monitoring *puc* expression following the addition of LPS to culture media for 30 min, 1 hr, and 2 hr. *Wnt5*, a ligand of the Wnt/Wg signaling pathway, whose regulation is considered independent of JNK pathway activity in this cell line and expression level is comparable with *puc*, was used as a negative control. The transcriptional levels of *puc* and *Wnt5* were analyzed using SYBR Green-based qPCR analysis with primer pairs from FlyPrimerBank, validated using the same primer analysis procedure and acceptance criteria described above. We observed similar levels of transient up-regulation of *puc* expression (down after 2 hr stimulation) with two independent primer pairs. Meanwhile the transcript level of *Wnt5* remained stable during the time course. The rapid up-regulation of *puc* expression detected using our qPCR assay is characteristic of the LPS transcriptional response in the S2 *Drosophila* cell line (PARK *et al.* 2004).

Our first application of FlyPrimerBank primers involved the evaluation of RNAi knockdown efficiency in early *Drosophila* embryos and the second examined transcriptional regulation by the JNK signaling pathway activity in cultured *Drosophila* cells. The two systems have completely distinct transcriptomes (eg. as shown by modEncode RNA-Seq (CHERBAS *et al.*

2011; GRAVELEY *et al.* 2011)), suggesting the utility of FlyPrimerBank primers for examination of transcript levels in diverse sample types (Supplemental Fig. 4).

Implementation of a FlyPrimerBank online tool

We implemented the FlyPrimerBank online tool to allow researchers to search for and identify qPCR primer pairs for *Drosophila* genes of interest. The user interface allows the user to search one or multiple genes with a single query. Gene ID mapping is built into the system so that users can query with any type of gene or protein identifier from FlyBase, including FBgn number, CG number or gene symbol. The user interface also supports gene identification from sequence by BLAST search. The search results page shows the overlap of conceptually amplified products with RNAi reagents from various collections, as well as primer pair information, including sequences, melting temperatures and the size of the predicted PCR product. Each primer pair is hyperlinked to a detailed annotation page where PCR products are aligned to the reference transcript sequence, and exon-exon junctions and the CDS start and stop are visually displayed. As described above, our results indicate that primer pairs are more likely to fail in instances where the exon-exon junction they span has a small intron as compared to primer pairs spanning exon-exon junctions of large intron size or primers pairs that do not span exon-exon junctions. Therefore, on the detailed annotation page we also display the size of the intron spliced out at each exon-exon junction. Due to changes in gene annotations associated with new FlyBase releases, we plan to periodically re-annotate the primers. At the time of manuscript preparation, the annotation at FlyPrimerBank was based on FlyBase release 5.51 (May 7th, 2013).

Unique to the FlyPrimerBank interface as compared to existing tools is a section where users can give feedback. Users can upload feedback about FlyPrimerBank primers they have tested and submit primers that were not designed by FlyPrimerBank but have been experimentally validated. This information will be displayed and as it accumulates, this added information will help researchers choose the best primer pairs, as well as allow us to identify genes for which new primers should be designed. Notably, we found that expression levels correlate with primer failure with respect to our thermal analysis criteria (Fig. 2). However, a primer considered to have 'failed' in our early embryo tests is not necessarily a suboptimal primer design, as it might meet criteria when levels of the gene are higher (*e.g.* at other developmental stages or in specific tissues). As such, users are required to submit information

regarding the tissue, stage or cell type from which cDNA was isolated when submitting feedback on the results obtained with a given primer pair. To help assess potential qPCR targets and troubleshoot qPCR failure, we also provide users with gene expression data from a large-scale effort to determine expression levels in various cell lines and embryonic developmental stages (CHERBAS *et al.* 2011; GRAVELEY *et al.* 2011).

Concluding Remarks

FlyPrimerBank is a comprehensive qPCR primer database for *Drosophila*, facilitating selection of primers for small- or large-scale studies. FlyPrimerBank is more flexible than most resources in that it provides an interface for submission of user feedback on primers in the database and for submission of alternative experimentally validated qPCR primer sequences. Evaluation of RNAi reagents by qPCR is becoming common practice for gene loss-of-function studies. However, the long dsRNA reagents widely used for *Drosophila* genes often overlap regions amplified by qPCR primers, potentially confounding their evaluation. For this reason, our systematic qPCR primer design strategy considers long dsRNA reagents from several public resources and relevant information is made available online. The results of our quality analyses, from both in vivo and cell-based studies, demonstrate the utility and quality of the resource.

Materials and Methods

Primer design and annotation

Sequence information for *Drosophila* genes was retrieved from FlyBase (<ftp://ftp.flybase.net/releases/>). CDS sequences were formatted as input for uPrimer, the primer design program implemented in Perl for PrimerBank. Up to three primer pairs per gene were selected based on primer parameters as well as predicted gene specificity (WANG and SEED 2003). The alternative algorithm and primer annotation program was developed in Java. DRSC and TRiP RNAi reagent information were retrieved from flyrnai.org. NIG stock information was retrieved from the NIG catalog (<http://www.shigen.nig.ac.jp/fly/nigfly/download/files/rnai.tsv>). VDRC stock information was retrieved from the VDRC catalog (<http://stockcenter.vdrc.at/control/fullCatalogueExcel>). The primer sequences for making double-stranded long RNAi reagents were collected and amplicon sequences of RNAi reagents were assembled by virtual PCR based on FlyBase release 5.51 using UP-TORR (Hu *et al.* 2013). The primer sequences from FlyPrimerBank were blasted against the sequences of RNAi reagents

and the overlap of each primer sequence with RNAi reagents was analyzed using a program developed in-house in Java.

Isolation of embryonic RNA

Approximately 300 embryos (0-4 hr old) were collected and chorions were removed by incubation for 5 min in 50% bleach. Embryos were washed with 0.1% TritonX-100, then an equal volume of Trizol (Invitrogen) and RNase-free 0.5 mm glass beads (Next Advance) were added to an Eppendorf Safe-Lock 1.5ml microcentrifuge tube (VWR). Embryos were homogenized by bead beating 3x3 min at 4^oC at a setting of 8 in a Bullet Blender (Next Advance) and stored at -80^oC until further processing. RNA was extracted with chloroform and precipitated with isopropanol. An RNA pellet was re-suspended in RDD buffer (Qiagen) and incubated with DNase I (Qiagen) for 10 min at room temperature. The sample was then diluted in RLT buffer and ethanol. Further cleanup proceeded with an RNeasy MinElute Cleanup Kit (Qiagen). RNA was eluted with RNase-free water. RNA concentration and purity (criteria: A₂₆₀/A₂₈₀ ratio near 2) was assessed using a Nanodrop 8000 spectrophotometer (Thermo-Scientific).

Generation of embryonic cDNA

A total of 1 microgram RNA was incubated with a mix of oligo(dT) and random hexamer primers in iScript reaction mix and iScript reverse transcriptase (iScript cDNA Synthesis Kit, Bio-Rad) for reverse transcription. Reaction conditions were: 5 min at 25^oC, 30 min at 42^oC, 5 min at 85^oC.

Evaluation of primers by thermal analysis/calibration curve analysis

cDNA from embryos expressing a control shRNA targeting EGFP was serially diluted four times by a factor of four (Bio-rad), starting with 1/20th of cDNA synthesis reaction volume. qPCR reactions included each primer at 0.4 micromolar in iQ SYBR Green Supermix with a reaction volume of 13 microliters. R-squared values and PCR efficiency were calculated using Bio-Rad CFX Manager based on the results of a two-step qPCR program (40 cycles, alternating between 10 sec at 95^oC and 30 sec at 56^oC) using a Biorad CFX96 Touch Real-Time PCR Detection System. Melt curve analysis was based on temperature ramping from 55^oC to 95^oC in 0.5^oC increments over 5 min.

Evaluation of primers by conventional PCR

PCR master mix included 15 microliters 2x GoTaq Green (Promega), 11.65 microliters water, 2.5 microliters cDNA and 0.85 microliters primer (10uM forward and reverse). The PCR program was 95^oC, 2 min, then 40 cycles alternating between 30 sec at 95^oC, 30 sec at 60^oC and 40 sec at 72^oC. Four microliters of PCR product was run on a 1% agarose gel for visual inspection of size.

26 microliters of the remaining PCR product was transferred to a flat bottom 96-well PCR plate (VWR). 90 microliters of PM buffer (QIAquick 96-well PCR Purification kit - Qiagen), were added to each sample, mixed by pipetting, and transferred to the QIAquick PCR purification column plate. Once added, the samples were vacuumed to remove the buffer and washed with 900 microliters PE buffer. The purification column plate was spun at 4,000 rpm for 5 min and vacuumed for 5 min to remove ethanol. The column plate was placed into a Nunclon 96-well plate (Sigma Aldrich). 60 microliters of water were added to each well, incubated at room temperature for 2 min, and spun at 4,000rpm for 5 min. The concentration of the purified DNA was measured using a Nanodrop 8000 spectrophotometer (Thermo-Scientific), which ranged from 5-45 nanograms/microliter. Purified DNA samples were sent for Sanger sequencing (Dana Farber/Harvard Cancer Center DNA Resource Core) using a sequencing primer downstream of the forward PCR primer. Sequencing results were aligned to the *Drosophila* transcriptome using NCBI Blast.

Assessment of transcript knockdown in shRNA-expressing embryos

Expression of shRNAs targeting EGFP (control) and shRNAs targeting various PKs was induced specifically in the female germline using the Gal4-UAS system (BRAND and PERRIMON 1993). Females heterozygous for the UAS-shRNA and either MTD-Gal4 (PETRELLA *et al.* 2007), a line bearing three versions of Gal4 expressed sequentially throughout oogenesis, or tub-Gal4, a line bearing two insertions of Gal4 expressed from a maternal tubulin promoter during mid and late oogenesis (STALLER *et al.* 2013), were crossed to shRNA-bearing males in order to recover fertilized eggs. RNA was prepared as indicated above, from 0-4 hr old eggs derived from Gal4/shRNA females cultured at 27⁰C. cDNA was generated from 1 microgram of purified RNA as outlined above. qPCR analysis was performed twice with technical triplicates using validated primers (above) in iQ SYBR Green Supermix (Bio-Rad), using a CFX96 Real-Time PCR detection system (Bio-Rad). Query transcript detection was normalized to the expression of three reference genes: *ribosomal protein L32*, *alpha-tubulin*, and either *nuclear fallout* or *Gapdh1*. These reference genes range in expression from high to low in 0-4 hr embryos, based on RNA-Seq data (GRAVELEY *et al.* 2011).

Monitoring stimulation of the JNK pathway in cells

The LPS (Lipopolysaccharide) -responsive Schneider S2 cells were grown at 25⁰C in Schneider's *Drosophila* medium (GibcoBRL) supplemented with 10% fetal bovine serum, and antibiotics (50

units/milliliter penicillin and 50 micrograms/milliliter streptomycin). A commercial LPS preparation (Sigma *E. coli* strain O55:B5) was dissolved in water and applied to cells in culture media at a final concentration of 10 micrograms/milliliter (BOUTROS *et al.* 2002; HORN *et al.* 2010). Cells were incubated with LPS in the culture media for 30 min, 1 hr or 2 hr before harvesting by scraping. Total RNA was isolated using a Qiagen RNeasy kit, with final elution in water. RNA quality and concentration were assessed using a Nanodrop 8000 spectrophotometer (Thermo-Scientific). cDNA synthesis was performed as outlined above. Gene expression levels were assessed by qPCR in triplicate and normalized to *alpha-tubulin* and *Gapdh1*. Fold induction was determined by comparing expression levels in treated cells versus non-treated cells. qPCR reactions included each primer at 0.1 micromolar in an 11 microliter reaction volume.

Online Implementation of FlyPrimerBank

The user interface was implemented as a collection of CGI scripts written in Perl. They are hosted on a shared server provided by the Research IT Group (RITG) at Harvard Medical School. The database is hosted on a MySQL server also provided by RITG. The alignment of the virtual PCR product on the target transcript is drawn on an HTML5 canvas using JavaScript.

Supplementary Material

1. Supplemental table 1: Results of primer pair testing.
2. Supplemental table 2: Protein kinase and phosphatase list
3. Supplemental figure 1: Determining the expression cutoff for primer evaluation.
4. Supplemental figure 2: Primer suitability test
5. Supplemental figure 3: Sequence and PCR product size
6. Supplemental figure 4: Comparison of the transcriptome of early embryo and S2 cells

Acknowledgements

We would like to thank the members of the Drosophila RNAi Screening Center, Transgenic RNAi Project and Perrimon laboratory for the suggestions and support. In particular, we would like to thank Charles Roesel, Laura Holderbaum, Michael Buckner and Quentin Gilly for their help. We also thank all of the past and current users of the DRSC and TRiP for providing valuable feedback. This work was supported in large part by NIGMS R01 GM067761 and GM084947, with additional support from NCR/ORIP R24 RR032668. S.E.M. is also supported in part by the Dana Farber/Harvard Cancer Center and N.P. is an investigator of the Howard Hughes Medical

Institute.

Table 1. FlyPrimerBank statistics

All primers	45158 (for 13860 genes)
Designed by PrimerBank algorithm	37647 (83%)
Designed by alternative algorithm	7511 (17%)
Isoform non-specific	44951 (99.5%)
Isoform specific	207 (0.5%)
Exon-exon junction spanning	10635 (24%)
Non exon-exon junction spanning	34523 (76%)
Overlap with any DRSC RNAi Reagents	17325 (38%)
Overlap with any NIG RNAi Reagents	11742 (26%)
Overlap with any VDRC-GD RNAi Reagents	9901 (22%)
Overlap with any VDRC-KK RNAi Reagents*	6591 (15%)
Overlap with any TRIP long hairpin Reagents*	1520 (3%)

* Please note that the percentage overlap is low for these in part because they are not full-genome collections.

Figure 1. Primer design and annotation pipeline.

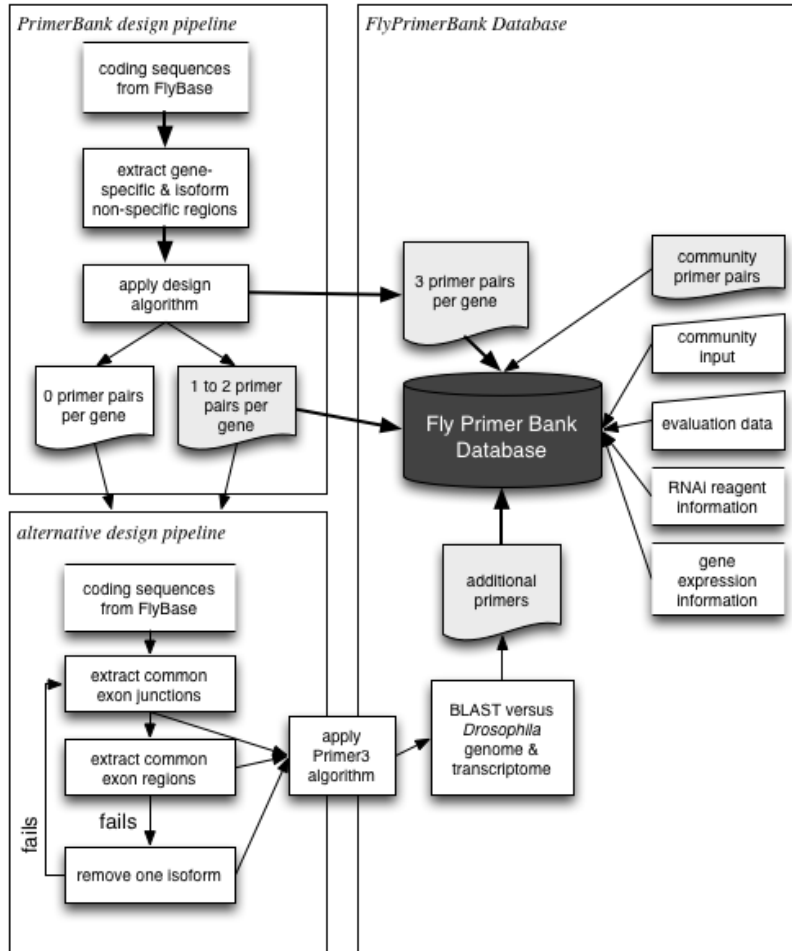


Figure 3. Primers that failed qPCR testing as a function of intron size.

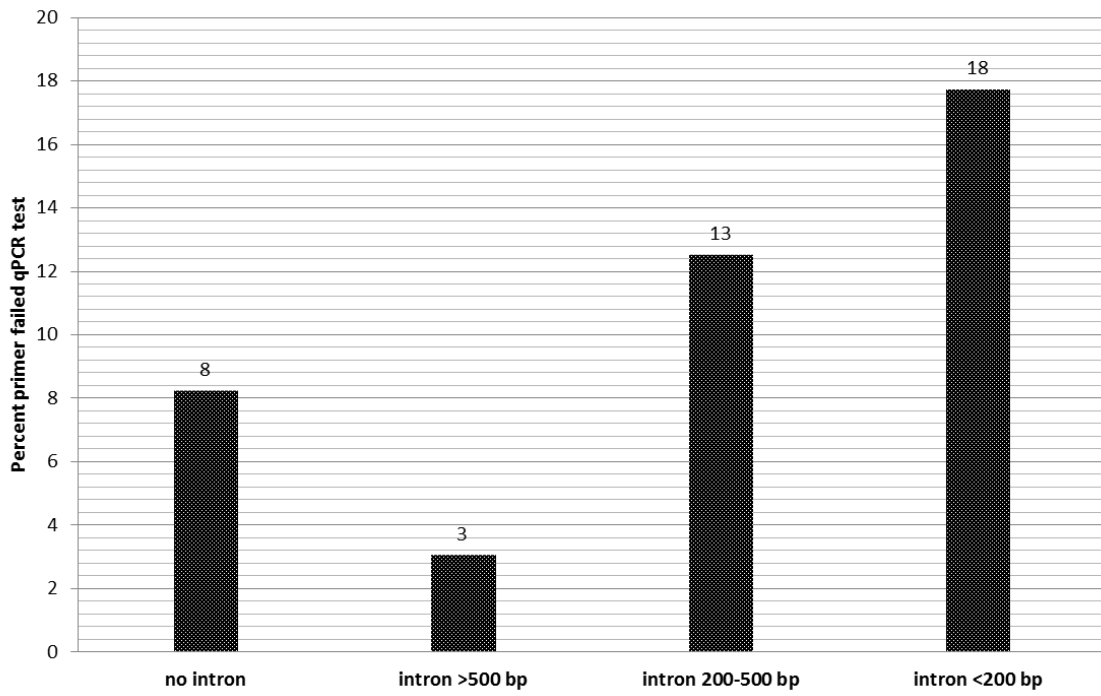


Figure 4. Observed RNAi knockdown levels are independent of primer design.

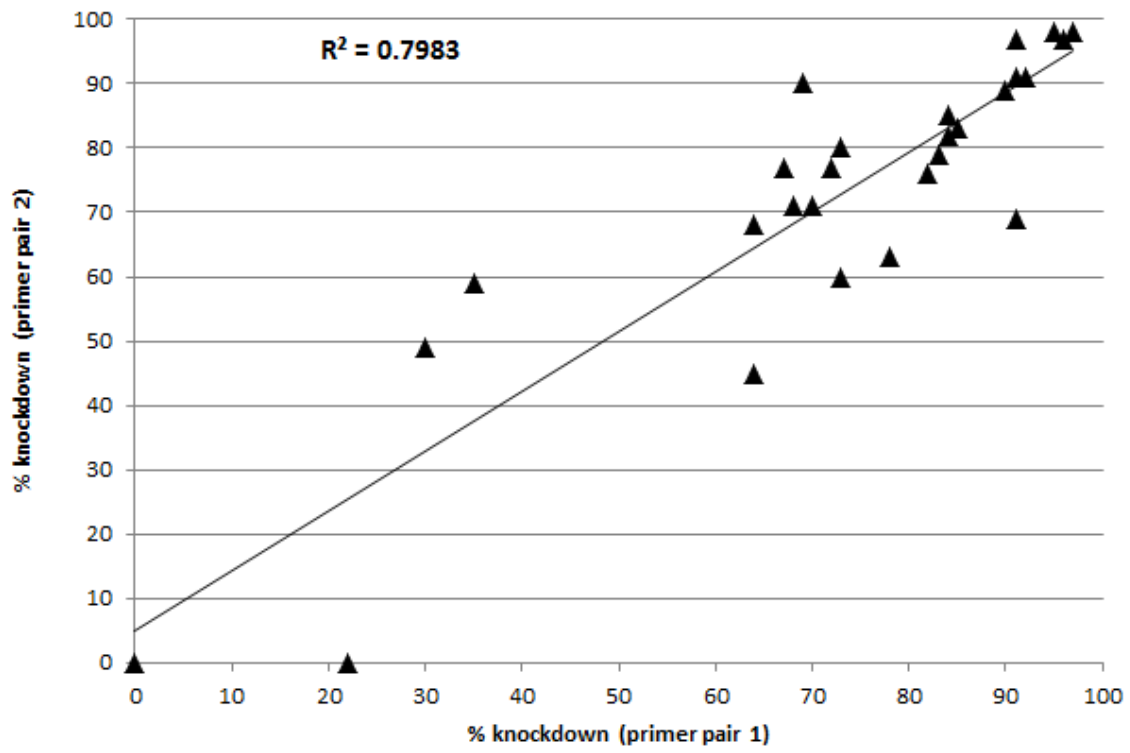


Figure 5. Monitoring JNK pathway activation. The *puc* gene is a direct target of the JNK pathway and is commonly used as a reporter for JNK activation (Boutros et al. 2002). A transient response of *puckered* (down after 2 hr stimulation) upon LPS stimulation in a *Drosophila* S2 cell line was observed. *Wnt5* serves as a negative control. Two independent *puckered* qPCR primer pairs (PP19428 and PP31584) in FlyPrimerBank show a similar trend in response.

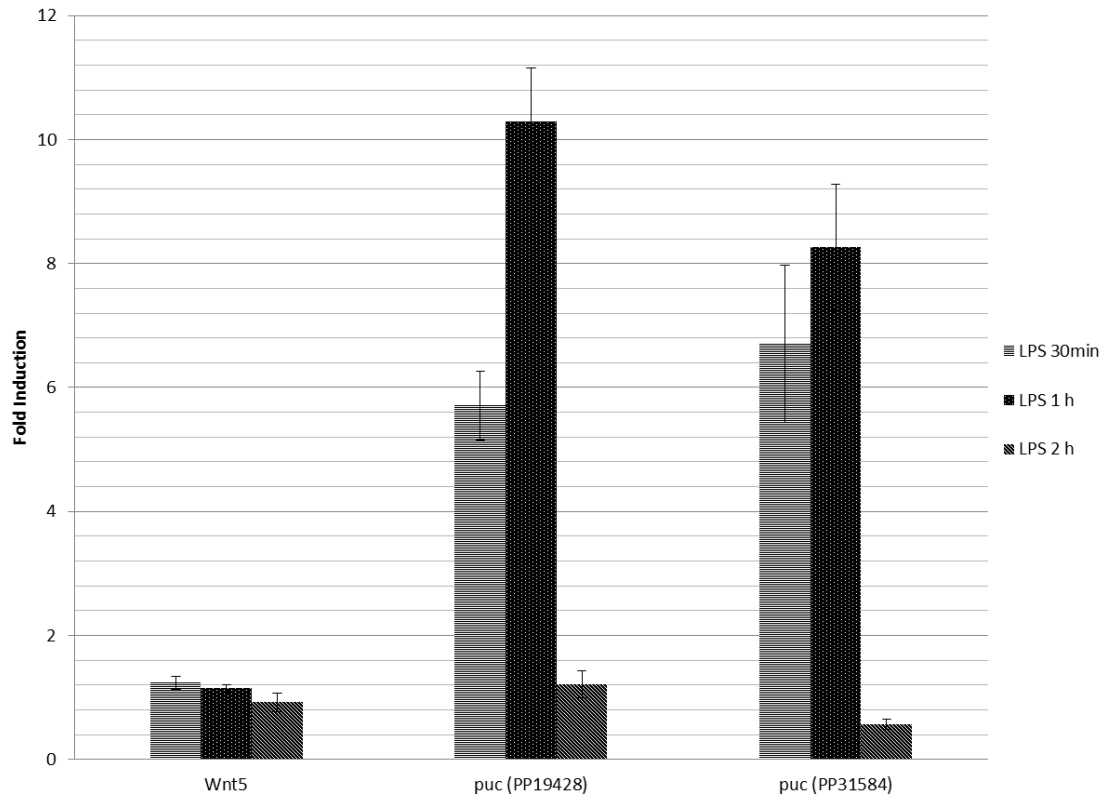


Figure 6. The FlyPrimerBank online user interface.

A

B

Search Term	Primer Pair	Forward Primer	Fwd Pri Temp	Reverse Primer	Rev Pri Temp	PCR Product	FBgn	Symbol	Isoforms Targeted	Region	Exon Spanning?	Overlaps	FlyBase Release	User qPCR Feedback	Links
N	PP18095	CGCTTCCTGCACAAGTGC	61.3°C	CCGCACTAGGTTTTCOCATT	61.6°C	75	FBgn0004647	N	2/2	CDS	No		r5.51		alignment
N	PP30347	GTCCGGGACTACTGTGAACAC	62.9°C	GTTCGGAAGGTCACCTGACA	62.8°C	84	FBgn0004647	N	2/2	CDS	No	TRIP	r5.51		alignment
N	PP5032	AGTCGGCACCACCAAGACTT	62.8°C	CCACCAACCGGGTATCAGTT	62.5°C	148	FBgn0004647	N	2/2	CDS	Yes		r5.51		alignment
wg	PP10700	CCAAAGTCGAGGGCAACAGAA	62.6°C	TGGATCCGCTGGTCCATGTA	62.6°C	117	FBgn0004009	wg	1/1	CDS	Yes	DRSC, VDRSC, KK	r5.51		alignment
wg	PP23467	BACCCAGCGATCCACTCTAC	61.4°C	CGGGGATTTCTGAAGTGGTGT	62.9°C	134	FBgn0004009	wg	1/1	CDS	No	DRSC, VDRSC, KK	r5.51		alignment
wg	PP35330	GAGGGGCAAAAATCTATTGGG	61.6°C	GCTGGTGAATCGGTAATGAAG	60.2°C	76	FBgn0004009	wg	1/1	CDS	Yes	DRSC	r5.51		alignment
dom	PP20977	CCGCATCACCACATATAGCG	61.2°C	AGAGGCTTCTATTGTGCTGGA	60.6°C	204	FBgn0020306	dom	4/4	CDS	No	DRSC, MIG	r5.51	Tested OK	alignment
dom	PP33015	AGAAAGCTCTGTTTTGCCG	60.3°C	CAGGGCCCTAGAAAGAAAGC	60.2°C	175	FBgn0020306	dom	4/4	CDS	No	DRSC, MIG	r5.51	Tested good	alignment
dom	PP8092	CAGACCCGTAACCTCCACTT	62.4°C	GCTGCTCACTGATCCTGCG	62.1°C	94	FBgn0020306	dom	4/4	CDS	No	NIG	r5.51	Tested good	alignment

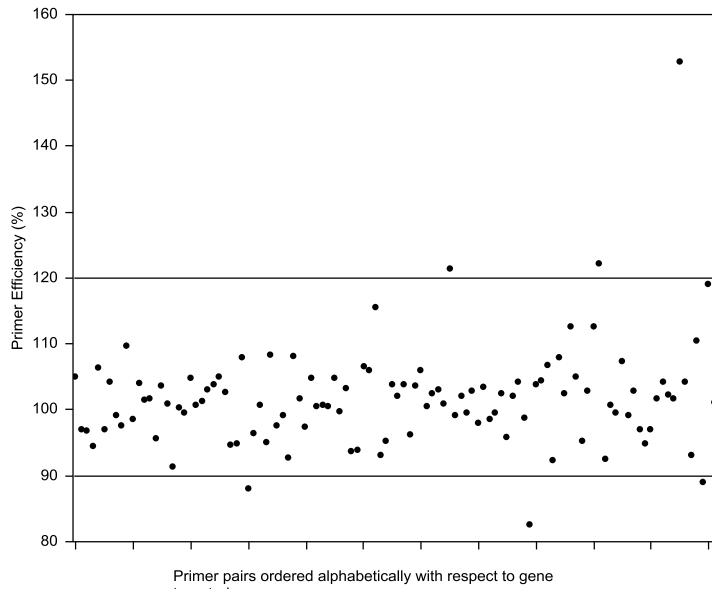
C

Submit gene list

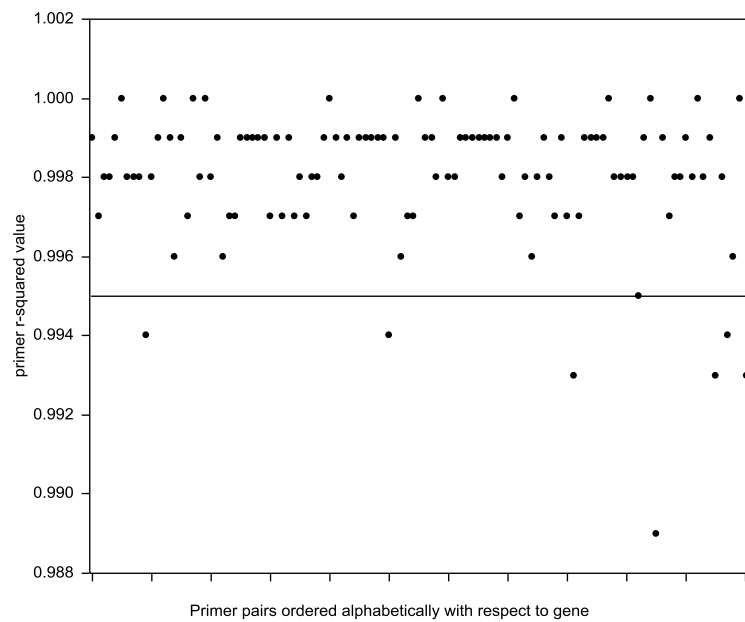
View alignment

Supplemental Figure 1. Primer suitability evaluation. (a) The upper and lower bounds for acceptable primer efficiency were 120% and 90%, respectively. Higher percentages suggest non-specific products, whereas lower percentages may reflect reaction inhibition. (b) Primers with an R-squared value (a measure of reproducibility) below 0.995 were considered unacceptable.

a.)

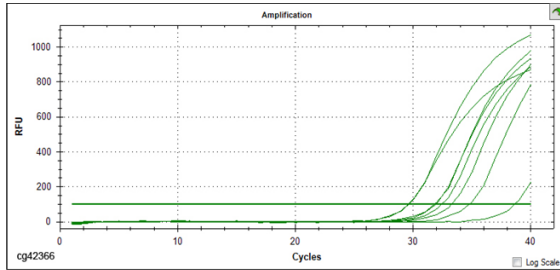


b.)

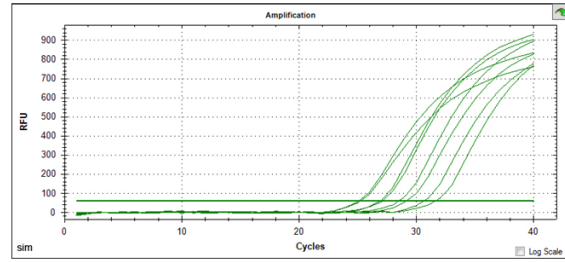


Supplemental Figure 2. Determining the expression cutoff for primer evaluation.

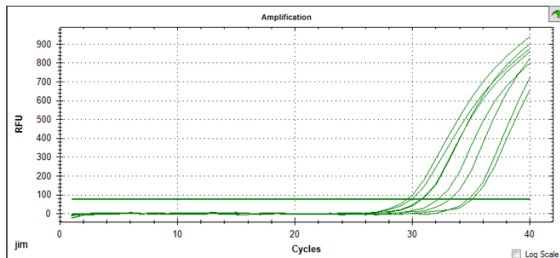
Genes represented in the left panels (*CG42866*, *pcl* and *jim*) do not express and are not suitable for primer evaluation in *Drosophila* early embryos while the genes in the right panels (*sim*, *peb* and *tai*) express and are suitable for primer evaluation.



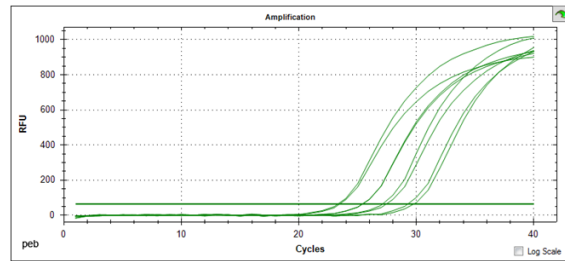
Primer for "cg42366"
RNASeq Data: 0 (0-2hr) 0 (2-4hr)



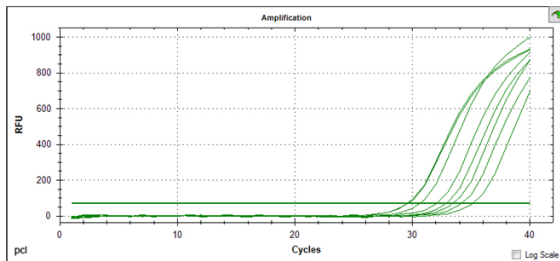
Primer for "sim"
RNASeq Data: 0 (0-2hr) 4 (2-4hr)



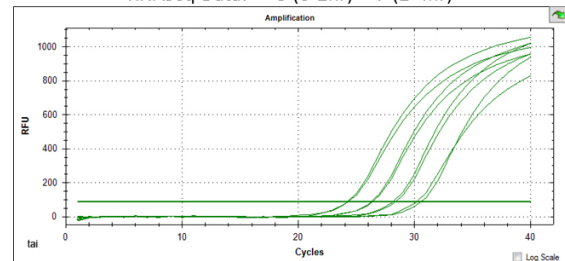
Primer for "pcl"
RNASeq Data: 0 (0-2hr) 0 (2-4hr)



Primer for "peb"
RNASeq Data: 3 (0-2hr) 7 (2-4hr)

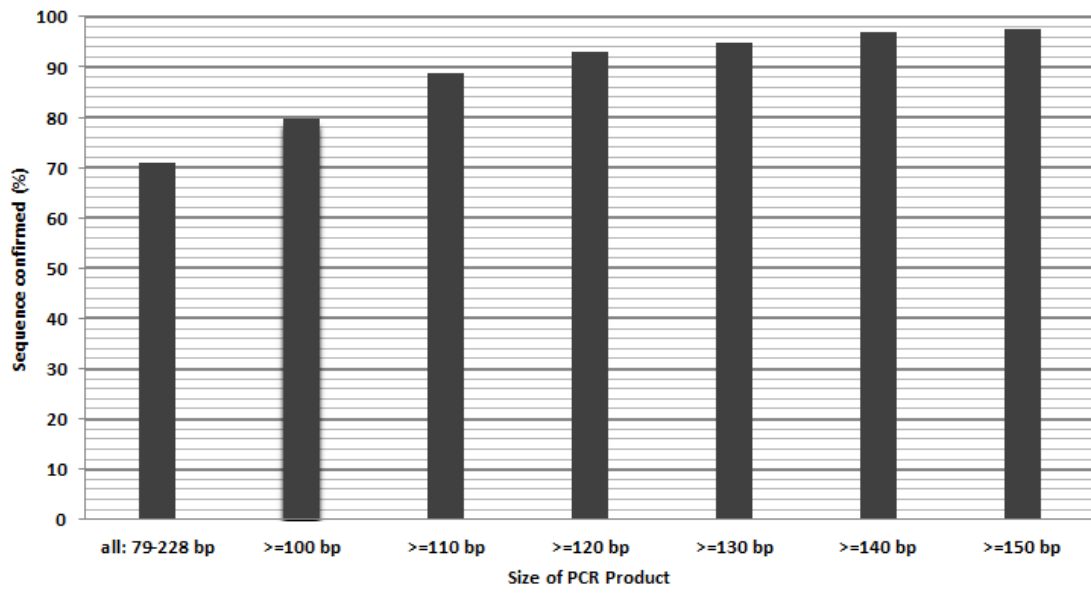


Primer for "jim"
RNASeq Data: 0 (0-2hr) 0 (2-4hr)

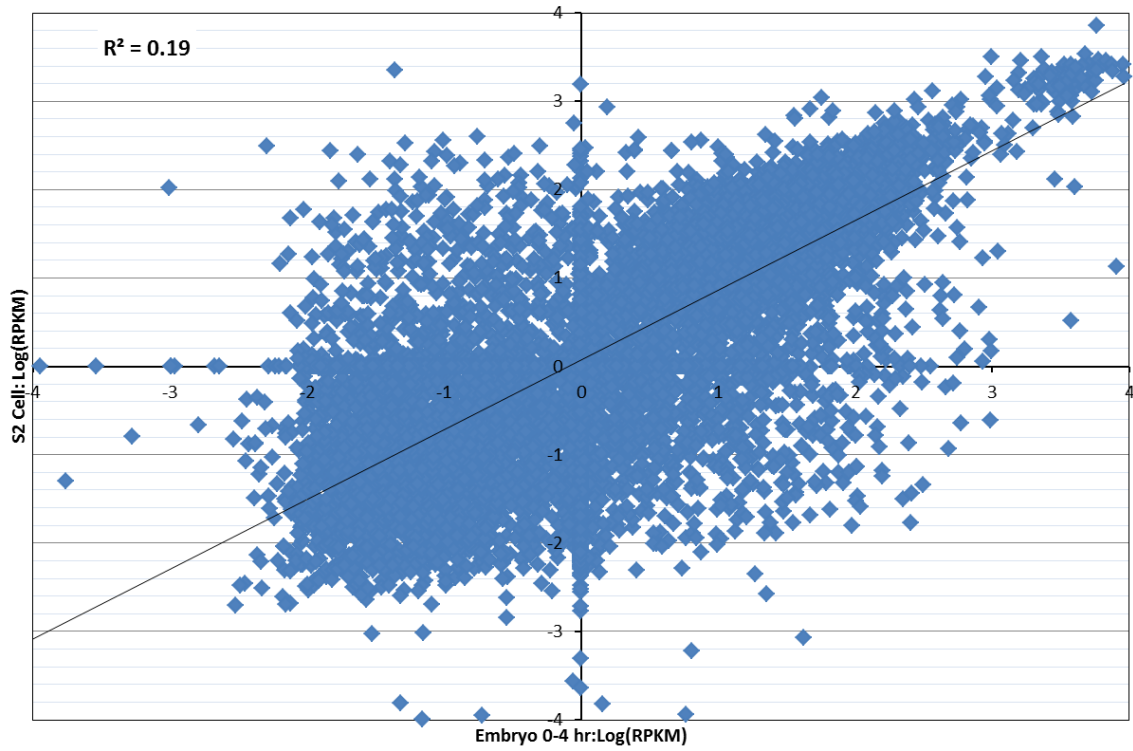


Primer for "tai"
RNASeq Data: 4 (0-2hr) 3 (2-4hr)

Supplemental Figure 3. Sequence validation success is related to PCR product size.



Supplemental Figure 4. Early embryos and S2 cells have different transcriptomes. This graph is based on RNA-Seq data from the modEncode consortium.



References

- BOND, D., D. A. PRIMROSE and E. FOLEY, 2008 Quantitative evaluation of signaling events in *Drosophila* S2 cells. *Biol Proced Online* **10**: 20-28.
- BOUTROS, M., H. AGAISSE and N. PERRIMON, 2002 Sequential activation of signaling pathways during innate immune responses in *Drosophila*. *Dev Cell* **3**: 711-722.
- BRAND, A. H., and N. PERRIMON, 1993 Targeted gene expression as a means of altering cell fates and generating dominant phenotypes. *Development* **118**: 401-415.
- BUSTIN, S. A., V. BENES, J. A. GARSON, J. HELLEMANS, J. HUGGETT *et al.*, 2009 The MIQE guidelines: minimum information for publication of quantitative real-time PCR experiments. *Clin Chem* **55**: 611-622.
- CHERBAS, L., A. WILLINGHAM, D. ZHANG, L. YANG, Y. ZOU *et al.*, 2011 The transcriptional diversity of 25 *Drosophila* cell lines. *Genome Res* **21**: 301-314.
- CLEMENS, J. C., C. A. WORBY, N. SIMONSON-LEFF, M. MUDA, T. MAEHAMA *et al.*, 2000 Use of double-stranded RNA interference in *Drosophila* cell lines to dissect signal transduction pathways. *Proc Natl Acad Sci U S A* **97**: 6499-6503.
- CUI, W., D. D. TAUB and K. GARDNER, 2007 qPrimerDepot: a primer database for quantitative real time PCR. *Nucleic Acids Res* **35**: D805-809.
- DIETZL, G., D. CHEN, F. SCHNORRER, K. C. SU, Y. BARINOVA *et al.*, 2007 A genome-wide transgenic RNAi library for conditional gene inactivation in *Drosophila*. *Nature* **448**: 151-156.
- FLOCKHART, I. T., M. BOOKER, Y. HU, B. MCELVANY, Q. GILLY *et al.*, 2011 FlyRNAi.org--the database of the *Drosophila* RNAi screening center: 2012 update. *Nucleic Acids Res* **40**: D715-719.
- GEISS, G. K., R. E. BUMGARNER, B. BIRDITT, T. DAHL, N. DOWIDAR *et al.*, 2008 Direct multiplexed measurement of gene expression with color-coded probe pairs. *Nat Biotechnol* **26**: 317-325.
- GRAVELEY, B. R., A. N. BROOKS, J. W. CARLSON, M. O. DUFF, J. M. LANDOLIN *et al.*, 2011 The developmental transcriptome of *Drosophila melanogaster*. *Nature* **471**: 473-479.
- HAMMOND, S. M., E. BERNSTEIN, D. BEACH and G. J. HANNON, 2000 An RNA-directed nuclease mediates post-transcriptional gene silencing in *Drosophila* cells. *Nature* **404**: 293-296.
- HORN, T., T. SANDMANN and M. BOUTROS, 2010 Design and evaluation of genome-wide libraries for RNA interference screens. *Genome Biol* **11**: R61.
- HU, Y., I. FLOCKHART, A. VINAYAGAM, C. BERGWITZ, B. BERGER *et al.*, 2011 An integrative approach to ortholog prediction for disease-focused and other functional studies. *BMC Bioinformatics* **12**: 357.
- HU, Y., C. ROESEL, I. FLOCKHART, L. PERKINS, N. PERRIMON *et al.*, 2013 UP-TORR: Online Tool for Accurate and Up-to-Date Annotation of RNAi Reagents. *Genetics*.
- LEFEVER, S., J. VANDESOMPELE, F. SPELEMAN and F. PATTYN, 2009 RTPrimerDB: the portal for real-time PCR primers and probes. *Nucleic Acids Res* **37**: D942-945.
- MANNING, G., G. D. PLOWMAN, T. HUNTER and S. SUDARSANAM, 2002 Evolution of protein kinase signaling from yeast to man. *Trends Biochem Sci* **27**: 514-520.
- MOHR, S., C. BAKAL and N. PERRIMON, 2010 Genomic screening with RNAi: results and challenges. *Annu Rev Biochem* **79**: 37-64.

- MORRISON, D. K., M. S. MURAKAMI and V. CLEGHON, 2000 Protein kinases and phosphatases in the *Drosophila* genome. *J Cell Biol* **150**: F57-62.
- NI, J. Q., L. P. LIU, R. BINARI, R. HARDY, H. S. SHIM *et al.*, 2009 A *Drosophila* resource of transgenic RNAi lines for neurogenetics. *Genetics* **182**: 1089-1100.
- NI, J. Q., R. ZHOU, B. CZECH, L. P. LIU, L. HOLDERBAUM *et al.*, 2011 A genome-scale shRNA resource for transgenic RNAi in *Drosophila*. *Nat Methods* **8**: 405-407.
- PARK, J. M., H. BRADY, M. G. RUOCCO, H. SUN, D. WILLIAMS *et al.*, 2004 Targeting of TAK1 by the NF-kappa B protein Relish regulates the JNK-mediated immune response in *Drosophila*. *Genes Dev* **18**: 584-594.
- PATTYN, F., P. ROBBRECHT, A. DE PAEPE, F. SPELEMAN and J. VANDESOMPELE, 2006 RTPrimerDB: the real-time PCR primer and probe database, major update 2006. *Nucleic Acids Res* **34**: D684-688.
- PATTYN, F., F. SPELEMAN, A. DE PAEPE and J. VANDESOMPELE, 2003 RTPrimerDB: the real-time PCR primer and probe database. *Nucleic Acids Res* **31**: 122-123.
- PECK, D., E. D. CRAWFORD, K. N. ROSS, K. STEGMAIER, T. R. GOLUB *et al.*, 2006 A method for high-throughput gene expression signature analysis. *Genome Biol* **7**: R61.
- PEREIRA, A. M., C. TUDOR, J. S. KANGER, V. SUBRAMANIAM and E. MARTIN-BLANCO, 2011 Integrin-dependent activation of the JNK signaling pathway by mechanical stress. *PLoS One* **6**: e26182.
- PERRIMON, N., J. Q. NI and L. PERKINS, 2010 In vivo RNAi: today and tomorrow. *Cold Spring Harb Perspect Biol* **2**: a003640.
- PETRELLA, L. N., T. SMITH-LEIKER and L. COOLEY, 2007 The Ovhts polyprotein is cleaved to produce fusome and ring canal proteins required for *Drosophila* oogenesis. *Development* **134**: 703-712.
- SPANDIDOS, A., X. WANG, H. WANG and B. SEED, 2010 PrimerBank: a resource of human and mouse PCR primer pairs for gene expression detection and quantification. *Nucleic Acids Res* **38**: D792-799.
- STALLER, M. V., D. YAN, S. RANDKLEV, M. D. BRAGDON, Z. B. WUNDERLICH *et al.*, 2013 Depleting gene activities in early *Drosophila* embryos with the "maternal-Gal4-shRNA" system. *Genetics* **193**: 51-61.
- STRONACH, B., 2005 Dissecting JNK signaling, one KKKinase at a time. *Dev Dyn* **232**: 575-584.
- WANG, X., and B. SEED, 2003 A PCR primer bank for quantitative gene expression analysis. *Nucleic Acids Res* **31**: e154.
- WANG, X., A. SPANDIDOS, H. WANG and B. SEED, 2012 PrimerBank: a PCR primer database for quantitative gene expression analysis, 2012 update. *Nucleic Acids Res* **40**: D1144-1149.
- YAMAMOTO, M. T., 2010 *Drosophila* Genetic Resource and Stock Center; The National BioResource Project. *Exp Anim* **59**: 125-138.