

# Functional screening in *Drosophila* identifies Alzheimer's disease susceptibility genes and implicates Tau-mediated mechanisms

Joshua M. Shulman<sup>1,2,3,\*</sup>, Selina Imboywa<sup>4,5,7,10</sup>, Nikolaos Giagtzoglou<sup>1,2,3</sup>, Martin P. Powers<sup>1,2,3</sup>, Yanhui Hu<sup>8</sup>, Danelle Devenport<sup>1,2</sup>, Portia Chipendo<sup>4,5,7,10</sup>, Lori B. Chibnik<sup>4,5,7,10</sup>, Allison Diamond<sup>4,5,7,10</sup>, Norbert Perrimon<sup>8,11</sup>, Nicholas H. Brown<sup>12</sup>, Philip L. De Jager<sup>4,5,7,10,†</sup> and Mel B. Feany<sup>6,9,†</sup>

<sup>1</sup>Department of Neurology and <sup>2</sup>Department of Molecular and Human Genetics, Program in Developmental Biology, Baylor College of Medicine, Houston, TX 77030, USA <sup>3</sup>Jan and Dan Duncan Neurological Research Institute, Texas Children's Hospital, Houston, TX 77030, USA <sup>4</sup>Program in Translational NeuroPsychiatric Genomics, Department of Neurology, <sup>5</sup>Department of Psychiatry and <sup>6</sup>Department of Pathology, Brigham and Women's Hospital, Boston, MA 02115, USA <sup>7</sup>Department of Neurology, <sup>8</sup>Department of Genetics and <sup>9</sup>Department of Pathology, Harvard Medical School, Boston, MA 02115, USA <sup>10</sup>Program in Medical and Population Genetics, Broad Institute, Cambridge, MA 02142, USA <sup>11</sup>Howard Hughes Medical Institute, Chevy Chase, MD, USA <sup>12</sup>The Gurdon Institute and Department of Physiology, Development and Neuroscience, University of Cambridge, Tennis Court Rd, Cambridge CB2 1QN, UK

Received July 30, 2013; Revised September 16, 2013; Accepted September 20, 2013

Using a *Drosophila* model of Alzheimer's disease (AD), we systematically evaluated 67 candidate genes based on AD-associated genomic loci ( $P < 10^{-4}$ ) from published human genome-wide association studies (GWAS). Genetic manipulation of 87 homologous fly genes was tested for modulation of neurotoxicity caused by human Tau, which forms neurofibrillary tangle pathology in AD. RNA interference (RNAi) targeting 9 genes enhanced Tau neurotoxicity, and in most cases reciprocal activation of gene expression suppressed Tau toxicity. Our screen implicates *cindr*, the fly ortholog of the human *CD2AP* AD susceptibility gene, as a modulator of Tau-mediated disease mechanisms. Importantly, we also identify the fly orthologs of *FERMT2* and *CELF1* as Tau modifiers, and these loci have been independently validated as AD susceptibility loci in the latest GWAS meta-analysis. Both *CD2AP* and *FERMT2* have been previously implicated with roles in cell adhesion, and our screen additionally identifies a fly homolog of the human integrin adhesion receptors, *ITGAM* and *ITGA9*, as a modifier of Tau neurotoxicity. Our results highlight cell adhesion pathways as important in Tau toxicity and AD susceptibility and demonstrate the power of model organism genetic screens for the functional follow-up of human GWAS.

## INTRODUCTION

Advances in human genetics have generated rapid progress in our understanding of the genetic risk underlying complex diseases, including common neurodegenerative disorders such as Alzheimer's disease (AD). Emerging data suggest that a large

collection of genetic variants impact disease risk, and the critical next step will be to understand the function of the implicated genomic loci in disease pathogenesis. Accomplishing this goal will require numerous complementary approaches, including bioinformatics, intermediate traits, *in vitro* systems, cell-based strategies, as well as model organism studies. These efforts

\*To whom correspondence should be addressed at: Jan and Dan Duncan Neurological Research Institute, 1250 Moursund St., Suite N.1150, Houston, TX 77030, USA. Tel: +832 824-8976; Fax: +832 825-1249; Email: joshua.shulman@bcm.edu  
†P.L.D.J. and M.B.F. contributed equally to this work.

will be essential to confirm the genes responsible for association signals (fine mapping), to understand how genetic variants affect gene function (gain- or loss-of-function), and to identify the relevant cellular pathway(s) that mediate disease susceptibility.

At autopsy, AD pathology is characterized by extracellular amyloid plaques and intracellular neurofibrillary tangles, predominantly composed of the amyloid-beta peptide and Tau protein, respectively (1). Tau neurotoxicity is central in current models of AD pathogenesis and may mediate the effects of amyloid-beta (2). Rare mutations in either the *amyloid precursor protein* or *microtubule-associated protein Tau* genes cause familial dementia syndromes. Besides risk alleles at *APOE*, genome-wide association studies (GWAS) have identified common genetic variation at numerous other loci in association with AD susceptibility (3–6). Further, numerous studies directly link genetic risk factors to changes in AD pathology (7–10) or related biomarkers (11). Therefore, direct modulation of AD neuropathology is likely an important mechanism of disease susceptibility, and this realization also suggests a basis for successful functional screening strategies.

Expression of human Tau in the nervous system of the fruit fly, *Drosophila melanogaster*, recapitulates several features of AD and provides a useful experimental model for functional genetic dissection of mechanisms (12,13). In addition, large-scale and unbiased genetic modifier screens relevant to AD have been successfully performed in *Drosophila* (14–16), including for validation of results from human GWAS (17,18). Here, we extend this proven strategy for functional screening of results from two published AD GWAS (3,19), systematically considering candidate genes with both significant ( $P < 5 \times 10^{-8}$ ) and suggestive ( $5 \times 10^{-8} < P < 10^{-4}$ ) evidence of association. The latter group of associated loci, though falling short of genome-wide significance criteria, is likely enriched for true positive signals (20,21). Our *Drosophila* screening strategy successfully identifies genes within such susceptibility loci likely to influence AD. Specifically, we highlight 10 genes with fly orthologs that modulate Tau toxicity, including *CD2AP*, *FERMT2* and *CELF1*. Importantly, while *CD2AP* was an established AD risk locus when our screen was undertaken, *FERMT2* and *CELF1* have been only recently and independently validated in association with AD susceptibility in the latest international GWAS meta-analysis (6). Thus, our results demonstrate how model organism studies can complement GWAS to identify AD susceptibility genes and further suggest that a number of these loci may modulate mechanisms of Tau-mediated neuronal injury.

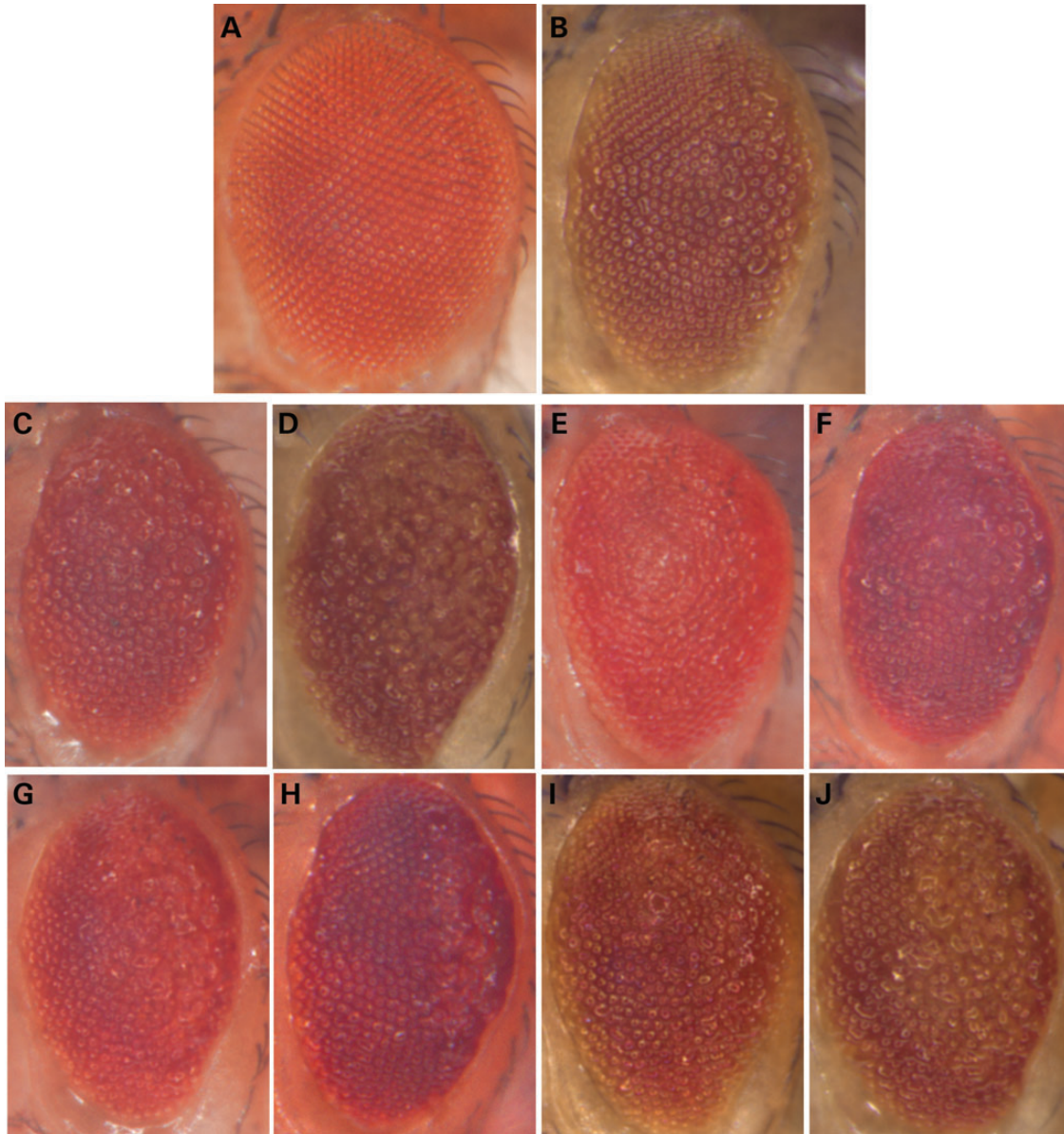
## RESULTS

At the time our study was undertaken, 10 genetic loci had demonstrated significant associations with AD susceptibility ( $P < 5 \times 10^{-8}$ ), and 5 of the implicated genes (*PICALM*, *CD2AP*, *ABCA7*, *EPHA1* and *AMPH*) have conserved orthologs (22) in the *Drosophila* genome (Supplementary Material, Table S1). We utilized FlyBase (23) to identify all available RNA-interference (RNAi) transgenic stocks to facilitate a systematic gene disruption screen (24,25). In addition, we obtained lines predicted to activate gene expression. All reagents were crossed to transgenic flies allowing tissue-specific expression of human *Tau*<sup>V337M</sup>, a mutant form of Tau associated with familial frontotemporal

dementia (12). When expressed in the fly eye, under the control of *GMR-GAL4*, *Tau*<sup>V337M</sup> causes a moderately reduced eye size and roughened surface (Fig. 1A and B), and this phenotype has been used successfully in our prior studies to identify second-site genetic interactors (14,17). RNAi lines were co-expressed with *Dicer2* to potentiate gene silencing (24,25). Of the five genes evaluated, we found that genetic manipulation of *cindr*, the fly ortholog of human *CD2AP* (26), robustly enhanced Tau toxicity. Co-expression of *cindr.RNAi* with *Tau* caused further reduction in eye size and increased surface architectural disruptions (Fig. 1, Supplementary Material, Fig. S1). At the low expression levels in which interaction with Tau was documented, *cindr.RNAi* was not associated with any retinal toxicity when expressed independently of Tau (Supplementary Material, Fig. S2). Thus, our results suggest that *cindr* protects against Tau retinal toxicity, identifying a potential mechanism for the association of human *CD2AP* with AD susceptibility.

Based on available GWAS summary data from the Alzheimer's Disease Genetics Consortium (ADGC) (3) and the Cohorts for Hearts and Aging in Genomic Epidemiology (CHARGE) (19), 147 additional independent loci (66 ADGC and 81 CHARGE) were considered for functional screening based on suggestive evidence of disease association ( $5 \times 10^{-8} < P < 10^{-4}$ ) (Table 1 and Supplementary Material, Table S2). For determination of candidate genes, we defined a genomic window for each independently associated SNP, based on regional linkage disequilibrium patterns ( $r^2 > 0.5$ ) defined in the International HapMap Project (27). This yielded an initial list of 119 candidate genes from 70 distinct loci, of which 63 genes (53%) were strongly conserved in the *Drosophila* genome, and 84 homologous fly genes were identified (Supplementary Material, Table S3) (22). The genes promoted to our functional screen represent 44 independently associated loci from AD GWAS. A tabulated flowchart of our validation screen is presented in Table 1, and a full list of SNPs, candidate genes, including those with and without *Drosophila* orthologs is presented in Supplementary Material, Tables S2–S4. Following the strategy we deployed for the established AD loci (mentioned earlier), we identified and obtained 233 distinct RNAi transgenic lines (~3 per candidate gene) to enable gene disruption at each targeted locus, and an additional 60 fly lines known or predicted to activate gene expression were also available for the majority of candidate genes (28). Supplementary Material, Table S5 details all of the *Drosophila* reagents tested in our screen.

As with the established AD susceptibility loci, we systematically crossed all available lines to the *Tau*<sup>V337M</sup> screening stock, identifying lines that enhanced or suppressed the rough eye phenotype. Eight additional genes were identified as robust Tau interactors (Table 2). In all cases, RNAi-mediated gene disruption enhanced Tau toxicity (Fig. 1), and we confirmed that RNAi lines did not disrupt eye morphology when tested independent of Tau in control crosses to *GMR-GAL4; UAS-Dcr2* (Supplementary Material, Fig. S2). Reciprocally, we found that activating expression of 7 genes suppressed the Tau rough eye (Fig. 2). All reported genetic modifiers showed statistically significant differences from control Tau transgenic animals when scored using a semi-quantitative scale ( $P < 0.001$ , Supplementary Material, Fig. S1).



**Figure 1.** RNAi-mediated disruption of AD candidate genes enhances Tau toxicity in *Drosophila*. Compared with control animals (A, *GMR-Gal4, UAS-Dcr2/+*), expression of human Tau generates a reduced eye size and moderate roughened appearance (B, *UAS-Tau<sup>V337M</sup>/+; GMR-Gal4, UAS-Dcr2/+*). RNAi directed against several candidate genes enhanced Tau toxicity, exacerbating the rough eye phenotype: *oxt* (C, *UAS-Tau<sup>V337M</sup>/+; GMR-Gal4, UAS-Dcr2/UAS-oxt.RNAi*); *cindr* (D, *UAS-Tau<sup>V337M</sup>/+; GMR-Gal4,UAS-Dcr2/+; UAS-cindr.RNAi<sup>3.73+81</sup>/+*); *Fit1* (E, *UAS-Tau<sup>V337M</sup>/+; GMR-Gal4,UAS-Dcr2/UAS-Fit1.IR.v46495*); *scb* (F, *UAS-Tau<sup>V337M</sup>/+; GMR-Gal4, UAS-Dcr2/UAS-scb.IR.JF02696*); *Lar* (G, *UAS-Tau<sup>V337M</sup>/UAS-Lar.IR.v36270; GMR-Gal4, UAS-Dcr2/+*); *SmB* (H, *UAS-Tau<sup>V337M</sup>/+; GMR-Gal4, UAS-Dcr2/UAS-SmB.IR.HM05097*); *aret* (I, *UAS-Tau<sup>V337M</sup>/+; GMR-Gal4,UAS-Dcr2/+; UAS-aret.IR.v41567/+*) and *CG6498* (J, *UAS-Tau<sup>V337M</sup>/+; GMR-Gal4,UAS-Dcr2/UAS-CG6498.IR.v35100*). All modifier effects were scored using a semi-quantitative rating scale and found to be significantly different ( $P < 0.001$ ) from controls, using pairwise independent sample *t*-tests (Supplementary Material, Fig. S1). The following RNAi lines showed consistent modifier effects, providing further independent confirmation: *UAS-cindr.IR.JF02695*, *UAS-Fit1.IR.v46494*, *UAS-Lar.IR.HMS00822*, *UAS-SmB.IR.v110713*, *UAS-aret.IR.v41568*, *UAS-CG6498.IR.JF02778* and *UAS-CG6498.IR.GL00220*. RNAi lines were not associated with any significant toxicity when expressed independently of Tau (Supplementary Material, Fig. S2). RNAi lines used in the screen were obtained from publicly available collections (24,25) or were requested from other *Drosophila* laboratories (26,44).

Notably, 2 of the 8 suggestively associated genes highlighted by our screen, *FERMT2* and *CELF1*, have now been independently validated as AD susceptibility loci based on the latest GWAS meta-analysis with substantially enhanced sample size (6). Two *Drosophila* genes, *Fit1* and *Fit2*, are strongly homologous with human *FERMT2*, and both genes were promoted to our screen based on suggestive disease association of rs17125924

( $P = 5.2 \times 10^{-5}$ ) (3). RNAi against either *Fit1* or *Fit2* enhanced the Tau rough eye (Fig. 1, Supplementary Material, Fig. S1), whereas lines predicted to activate expression of these genes suppressed Tau (Fig. 2). Similarly, loss- or gain-of-function in *aret*, the fly ortholog of *CELF1*, enhanced and suppressed Tau retinal toxicity, respectively. *CELF1* was evaluated along with 7 other conserved genes out of 10 candidates from the

**Table 1.** Flowchart for screening of suggestive AD loci

	ADGC	CHARGE	Total
Independently associated loci	66	81	149
Loci containing genes	30	40	70
Gene candidates	51	68	119
Conserved genes (loci)	24 (18)	39 (26)	63 (44)
Fly orthologs	35	49	84
Tau modifiers	6	3	9

Linkage-disequilibrium (LD)-based pruning was used to determine *independently associated loci* with suggestive evidence ( $5 \times 10^{-8} < P < 1 \times 10^{-4}$ ) for association with AD based on published GWAS from the ADGC (3) and CHARGE (19). A genomic window based on regional LD patterns ( $r^2 > 0.5$ ) was used to identify regional *gene candidates*. Not all loci had gene candidates based on these criteria. The DIOPT (22) was used to identify evolutionarily *conserved genes* and corresponding *fly orthologs*, which were promoted to the functional screen to identify *Tau modifiers*.

**Table 2.** AD loci showing functional interactions with Tau in *Drosophila*

SNP	CHR	P-value	Human gene	Fly ortholog(s)
<b>ADGC</b>				
rs9349407	6	$8.6 \times 10^{-9}$	<i>CD2AP</i>	<i>cindr</i>
rs7175782	15	$2.6 \times 10^{-5}$	<i>SNRPN</i>	<i>SmB</i>
rs2136530	9	$3.4 \times 10^{-5}$	<i>PTPRD</i>	<i>Lar</i>
rs6498673	16	$3.9 \times 10^{-5}$	<i>XYLT1</i>	<i>oxt</i>
rs17125924	14	$5.2 \times 10^{-5}$	<i>FERMT2</i>	<i>Fit1, Fit2</i>
rs7206295	16	$7.1 \times 10^{-5}$	<i>ITGAM</i>	<i>scb</i>
<b>CHARGE</b>				
rs2242081	11	$2.3 \times 10^{-5}$	<i>CELF1</i>	<i>aret</i>
rs7722928	5	$2.9 \times 10^{-5}$	<i>MAST4</i>	<i>CG6498</i>
rs267526	3	$9.6 \times 10^{-5}$	<i>ITGA9</i>	<i>scb</i>

The listed genes showed robust genetic interactions with Tau neurotoxicity based on the *Drosophila* functional screen.

SNP, single nucleotide polymorphism; CHR, chromosome; P-value, based on GWAS performed by the ADGC (3) and CHARGE (4).

genomic locus identified by the rs2242081 association with AD ( $P = 2.3 \times 10^{-5}$ ) (19). *aret* was the only homologous fly gene nominated by this locus that interacted with Tau toxicity, illustrating the utility of our strategy to annotate the most likely causal genes within susceptibility loci.

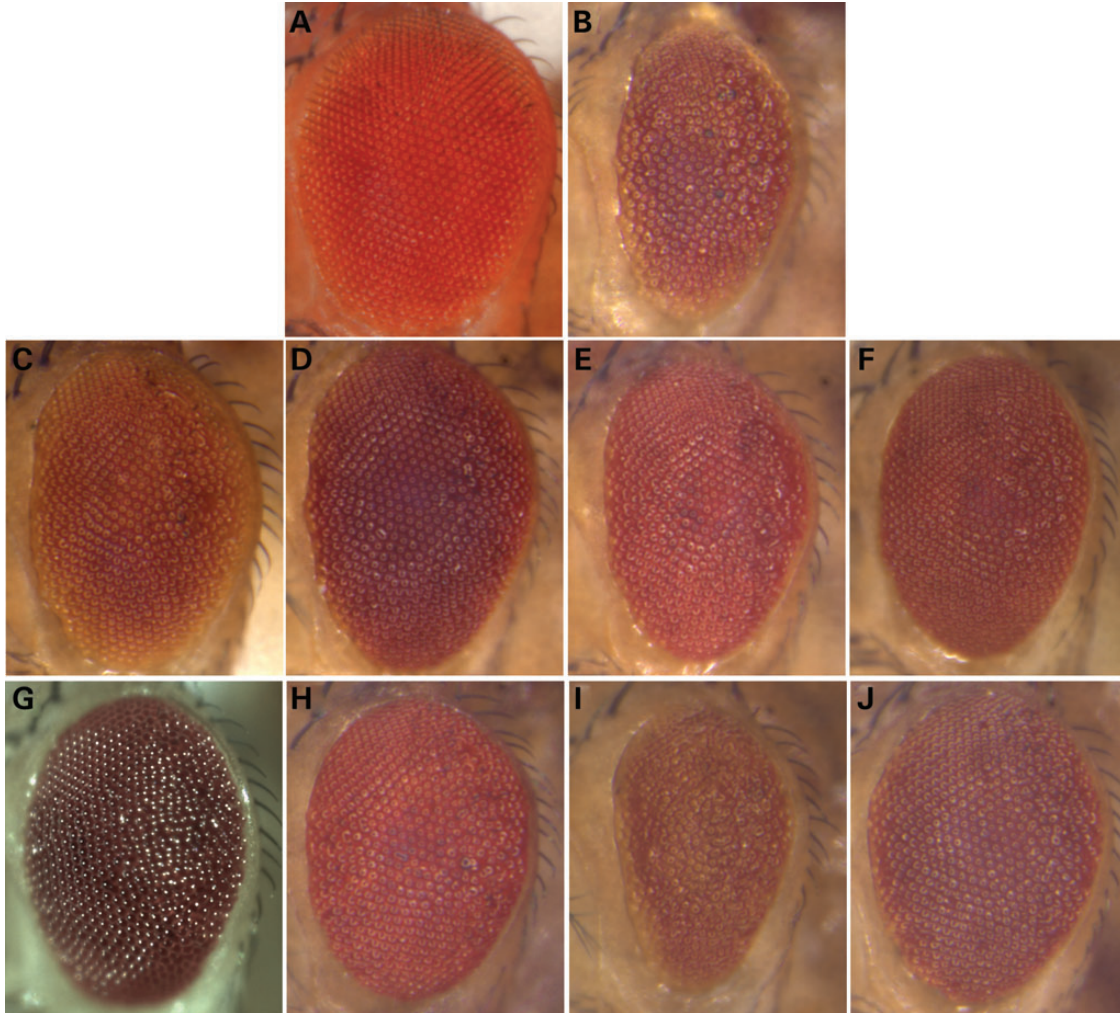
Of the established AD susceptibility loci, both *CD2AP* and *FERMT2* have been implicated in cell adhesion (29,30), and as discussed earlier, both loci possess fly orthologs that modify Tau toxicity. Specifically, *FERMT2* encodes a member of the kindlin protein family, which transduces signals from integrin adhesion receptors (31), and *CD2AP* similarly functions with integrins to maintain glomerular adhesion and structural integrity in the mammalian kidney (32). Intriguingly, among the comprehensive list of suggestively associated loci were several human genes encoding integrin receptor alpha-subunits, including *ITGAM*, *ITGA8* and *ITGA9* (Supplementary Material, Table S2). Consequently, we evaluated homologous *Drosophila* integrins in our screen, including *scab*, *inflated*, *alphaPS4* and *alphaPS5* (Supplementary Material, Table S3). RNAi against *scab*, encoding a fly integrin alpha subunit homologous to both *ITGAM* and *ITGA9*, enhanced the Tau rough eye (Fig. 1, Supplementary Material, Fig. S1). Further, lines that activate expression of *scab* either suppressed or enhanced Tau (Fig. 2), likely

due to dominant-negative interactions at higher expression levels, as previously reported for *Drosophila* integrins (33). We also tested lines disrupting *inflated* (*if*), encoding another *Drosophila* integrin alpha subunit homologous to human *ITGA8*. Although RNAi against *if* provided some support for an enhancing interaction with Tau (data not shown), we were unable to confirm with a second, independent reagent (either another RNAi line or activating insertion), precluding definitive functional validation of this gene based on our screening assay. Several other genes showed interactions with Tau, as detailed in Table 1 and Figures 1 and 2, including additional potential regulators of cell adhesion pathways.

## DISCUSSION

By integrating results from AD GWAS with a *Drosophila* functional screen, we identify nine genes with potential roles in AD pathogenesis, supported by association with disease susceptibility in humans and genetic interactions with Tau *in vivo*. Following the success of GWAS to identify risk loci for complex genetic disorders such as AD, the critical next step will be to confirm the responsible genes and begin to understand the relevant molecular mechanisms. Our screening strategy is well suited to achieve these goals. In the case of three loci with established links to AD—*CD2AP*, *FERMT2* and *CELF1*—we show that genetic manipulation of fly gene homologs modulates Tau neurotoxicity. These results help to (1) identify the gene responsible for a locus association and (2) establish a potential mechanism based on the functional screening paradigm (in our case, Tau toxicity). In an independent study, *BINI* was similarly implicated to alter Tau-mediated neuronal injury (18). At present, the refinement and fine mapping of GWAS signals to determine the causal gene remains a challenge (34). The haplotypes identified by associated polymorphisms often contain multiple genes, including many that a priori appear to be equally good candidates. For example, in the case of the *CELF1* locus considered in our analysis, the most strongly associated SNP tag identified an LD-based genomic interval overlapping 10 gene candidates (Supplementary Material, Table S2), of which 8 were sufficiently conserved in the *Drosophila* genome for promotion to our screen. However, only *aret* modified the Tau rough eye, validating *CELF1* as the most likely gene responsible for the locus association with AD susceptibility. While our results suggest that many AD susceptibility genes may influence Tau-mediated neuronal injury, future studies will be required to establish the detailed mechanisms. For example, it will be important to determine, using fly models or other experimental systems, whether these genes directly or indirectly lead to Tau hyperphosphorylation, misfolding or aggregation, which are all established correlates of increased toxicity and disease progression (2).

Importantly, neither the *FERMT2* nor *CELF1* loci were established, based on the most stringent genome-wide significance criteria ( $P < 5 \times 10^{-8}$ ), when we initiated this study. Rather, these candidates were among a comprehensive list of 119 genes from 70 loci with suggestive evidence of association ( $5 \times 10^{-8} < P < 10^{-4}$ ) based on earlier studies (3,19). The independent validation of these two loci in the recently reported GWAS meta-analysis (6) powerfully demonstrates the validity of the *Drosophila* screening approach to enhance human



**Figure 2.** Activating AD candidate genes modifies Tau toxicity in *Drosophila*. Compared with control animals (A, *GMR-Gal4/+*), expression of human Tau generates a reduced eye size and moderate roughened appearance (B, *UAS-Tau<sup>V337M</sup>/+*; *GMR-Gal4/+*). Lines predicted to activate expression of candidate genes were suppressors of the Tau rough eye: *Lar* (C, *UAS-Tau<sup>V337M</sup>/+*; *GMR-Gal4/UAS-Lar*); *Fit2* (D, *UAS-Tau<sup>V337M</sup>/+*; *GMR-Gal4/+*; *Fit2<sup>EY08530</sup>*); *Fit1* (E, *UAS-Tau<sup>V337M</sup>/+*; *GMR-Gal4/UAS-Fit1*); *oxt* (F, *UAS-Tau<sup>V337M</sup>/+*; *GMR-Gal4/+*; *oxt<sup>EPG4946</sup>*); *Smb* (G, *UAS-Tau<sup>V337M</sup>/+*; *GMR-Gal4/+*; *UAS-Smb/+*) and *aret* (H, *UAS-Tau<sup>V337M</sup>/+*; *GMR-Gal4/+*; *UAS-aret/+*). Two different lines predicted to activate expression of *scb* either enhanced (I, *UAS-Tau<sup>V337M</sup>/+*; *GMR-Gal4/UAS-scbVoll*) or suppressed (J, *UAS-Tau<sup>V337M</sup>/+*; *GMR-Gal4/scb<sup>EY10270</sup>*) Tau toxicity, and consistent results were seen with the independent lines *scb<sup>EY02806</sup>* and *UAS-scbVoll(III)*, respectively. All modifier effects were scored using a semi-quantitative rating scale and found to be significantly different ( $P < 0.001$ ) from controls, using pairwise independent sample *t*-tests (Supplementary Material, Fig. S1). Activating lines used in the screen were obtained from publicly available collections (28) or were requested from other *Drosophila* laboratories (45–48); the *UAS-Fit1* transgenic line was generated *de novo* (see Materials and Methods).

genetic studies. As we screened 84 fly gene homologs and identified only 9 Tau modifiers, it is highly unlikely that we would have identified homologs of *FERMT2* and *CELF1* (*fit1*, *fit2* and *aret*) simply by chance ( $P < 0.001$ ). In fact, the overall ‘hit’ rate of Tau modifiers in our study ( $\sim 10\%$ ) is  $\sim 10$ -fold higher than that in similar screening efforts of unselected *Drosophila* genes (14), suggesting that our candidate gene list was indeed enriched for modulators of Tau-mediated neurodegeneration. It is now recognized that susceptibility for complex genetic disorders, including neuropsychiatric diseases like AD, is likely influenced by a large number of genetic variants, including perhaps hundreds of distinct genomic loci (20,21). With the completion of the recent international meta-analysis including 74 000 subjects (6), we are likely approaching the upper limit of sample size and statistical power achievable using current

GWAS designs. Therefore, innovative approaches are needed if we are to identify additional loci among those falling short of the genome-wide significance threshold. While such variants may individually have relatively weak effects on disease risk, a comprehensive list may facilitate identification of important cellular pathways in AD pathogenesis. Our results suggest that model organism screening might be one successful strategy to accomplish this goal. Thus, like *CELF1* and *FERMT2*, we suggest that six other genes—*SNRPN*, *PTPRD*, *XYLT1*, *ITGAM*, *ITGA9* and *MAST4*—with similar suggestive disease associations and shown here to possess fly orthologs that also interact with Tau, become excellent candidates for further study in both human subjects and model systems relevant to AD.

Several genetic loci identified by AD GWAS, including *CD2AP* and *FERMT2*, have been similarly implicated with

roles in cellular adhesion, and more specifically function coordinately with integrin receptors (31,32). Besides the *Drosophila* orthologs of these loci (*cindr*, *Fit1* and *Fit2*), we additionally find that the fly integrin receptor gene *scab* interacts with Tau toxicity, which was evaluated based on suggestive associations of the human *ITGA9* and *ITGAM* loci with AD. Other genes identified by our functional screen, *PTPRD* and *XYLTI*, also have established roles in cellular adhesion (35,36). Notably, a recent analysis of co-expression networks in the brain transcriptome highlighted functional modules representing integrin adhesion, cell adhesion and the extracellular matrix among those most significantly dysregulated in AD (37). Understanding the mechanism by which neuronal and/or synaptic adhesion may modulate Tau toxicity and AD susceptibility will require more detailed investigation; however, we hypothesize that dynamic changes in the actin cytoskeleton might be important, as suggested by prior work (38,39). Importantly, *CD2AP* is an actin-associated protein (40), and integrin signaling—mediated by *FERMT2*—can re-organize the actin cytoskeleton (31).

Ultimately, multiple strategies will be required for the comprehensive functional evaluation of candidate disease susceptibility loci, and no single approach will be without limitations. While *Drosophila* offers powerful and rapid genetics, supporting a medium-to-high-throughput screening strategy, not all AD susceptibility genes are conserved between human and flies (Supplementary Material, Table S5). Lack of conservation precluded evaluation of genes involved in lipid metabolism (*APOE* and *CLU*) and immunity (*CRI*, *CD33* and *MS4A*), for example. Further, while the literature supports a central role for Tau leading to neuronal death in AD (2), many risk loci may impact alternative disease mechanisms. The Tau transgenic model utilized in our screen does not address *APP* cleavage or the clearance of amyloid- $\beta$ , which are key determinants of AD pathogenesis, although Tau is likely an important mediator of amyloid- $\beta$  toxicity (1,2). Thus, it may be important in future work to iteratively screen AD susceptibility genes with several complementary assays. It is notable that all of the genes highlighted by our screen were found to be loss-of-function enhancers of Tau toxicity, consistent with a potential protective role in AD. In prior studies using a similar screening strategy (14,17), we have additionally identified loss-of-function suppressors, although such genes appear to be less common overall. It is possible that this reflects a greater sensitivity of our screening assay for enhancers or rather could be a consequence of the underlying genetic determinants of Tau-induced neuronal injury. Future functional studies in flies or other systems may additionally help identify susceptibility genes, which function as endogenous promoters of AD pathogenesis. Finally, our strategy required several assumptions to identify candidate genes from associated polymorphisms. While linkage-disequilibrium criteria provide a conservative estimate for the genomic window containing a potential causal variant, regulatory variants could potentially act over much longer ranges to impact candidate genes outside this interval. Accounting for such distant effects, however, would have required screening a much greater number of gene candidates. Given that regulatory variants indeed appear to be enriched among AD-associated variants (41), one potential refinement to our strategy would be to prioritize additional genes in which brain expression is linked to associated polymorphisms.

In conclusion, we demonstrate how a model organism screening strategy can identify AD susceptibility variants and enhance human GWAS results by providing clues to molecular mechanisms. Our results suggest that many AD risk genes are determinants of Tau-mediated neuronal injury and further highlight cell adhesion as one important pathway for further study. When coupled with emerging human genomic data, simple animal models, such as the *Drosophila* system used here, show great promise to accelerate the functional genetic dissection of complex diseases.

## MATERIALS AND METHODS

### Identification of candidate genes and orthologs

Significant ( $P < 5 \times 10^{-8}$ ) and suggestive ( $5 \times 10^{-8} < P < 1 \times 10^{-4}$ ) SNP associations with AD were based on published GWAS (3,19). Linkage-disequilibrium (LD)-based clumping ( $r^2 > 0.1$ ), implemented within PLINK (42), was used to define the top-ranked and independently associated SNPs. Next, a genomic window was defined around each associated SNP based on regional LD patterns ( $0.5 < r^2 < 1$ ) from HapMap (27). Any gene from the human reference genome (build hg18) overlapping this defined interval was designated a candidate causal gene and considered further for functional analyses. For identification of fly gene orthologs, we used the *Drosophila* Integrated Ortholog Prediction Tool (DIOPT) (22), available as a web-based tool ([http://www.flyrnai.org/cgi-bin/DRSC\\_orthologs.pl](http://www.flyrnai.org/cgi-bin/DRSC_orthologs.pl)). DIOPT facilitates rapid query of fly orthologs based on 10 distinct bioinformatic algorithms. We applied a stringent standard requiring a 'DIOPT score' of 2 or higher for promotion of a gene to our screen, meaning that at least two distinct algorithms agreed on the ortholog pairing. For the 67 human candidate genes with identifiable fly orthologs, the mean DIOPT score was 5.0 (SD = 2.2). Thirteen genes had more than one identifiable fly ortholog meeting our pre-specified criteria, and in these cases, all corresponding fly genes were considered for screening. Supplementary Material, Tables S4 and S5 detail the identification of *Drosophila* orthologs based on human genes, including DIOPT scores and the evidence of homology.

### *Drosophila* genetics

Fly gene orthologs were queried within FlyBase to identify available genetic reagents for manipulation of candidate gene function (23). For each candidate susceptibility gene, we obtained RNA-interference (RNAi) stocks and lines to activate gene expression. Transgenic RNAi lines exist for virtually all *Drosophila* genes, and we obtained all available lines to evaluate target genes (24,25). Additional lines consisted of either previously characterized, published reagents or those available from collections of transposon alleles predicted to activate gene expression based on their insertion sites (28). Reagents were obtained from the Bloomington *Drosophila* Stock Center, the Harvard/Exelixis collection, the Vienna *Drosophila* RNAi Center, the Harvard Transgenic RNAi project (TRiP), or requested from laboratories within the fly research community. The *UAS-Eph* transformant was re-established by injecting *pUAS-Eph* plasmid generously provided by Dr. R. Dearborn and Dr. S. Kunes (43). The *UAS-Fit1.GFP* flies were established

by amplifying the Fit1 coding sequence and inserting into a pUAS vector for P-element transformation. The coding sequence for green fluorescent protein flanked by 3 serines was inserted within a poorly conserved loop in domain F1, after residue 228. A genomic rescue construct with GFP in this position rescued Fit1 mutations. All *Drosophila* reagents used in this study are detailed in Supplementary Material, Table S5, and full genotypes are also included in the figure legends with the relevant references.

The *UAS-Tau<sup>V337M</sup>* line used for evaluation of candidate genes has been previously described (12,14,17). All functional validation tests were the product of a single generation genetic cross and assessed the ability of lines to enhance or suppress the moderate rough eye phenotype of *UAS-Tau<sup>V337M</sup>/+*; *GMR:gal4/+* animals. All RNAi reagents were evaluated with co-expression of *Dicer2*, using animals of the genotype, *UAS-Tau<sup>V337M</sup>/+*; *UAS-Dcr2*, *GMR-Gal4/+*. All reported crosses were carried out at 25°C. Reported modifier effects (Table 1) are based on lines that showed strong and consistent effects to enhance or suppress the Tau<sup>V337M</sup> rough eye phenotype in repeat experiments. Modifier effects were photographed and quantified in female animals, but all modifiers showed consistent effects in both sexes. All lines found to enhance Tau toxicity were evaluated with *GMR-Gal4*, *UAS-Dcr2* in isolation, and none demonstrated significant toxicity in the absence of Tau (Supplementary Material, Fig. S2). To minimize the chance that observed modifier interactions were caused by off-target effects of RNAi transgenic stocks, we required consistent activity of at least two independent RNAi lines, or independent confirmation of modifier effects based on activating gain-of-function lines.

## SUPPLEMENTARY MATERIAL

Supplementary Material is available at HMG online.

## ACKNOWLEDGEMENTS

We thank Dr. U. Pandey, Dr. R. Bodmer, Dr. C. Micchelli, Dr. P. Macdonald, Dr. V. Panin, Dr. L.S. Sashidhara, Dr. R. Benton, Dr. S. Hayashi, Dr. H. Bellen, Dr. A. Diantonio, Dr. S. Nishihara, Dr. R. Johnson, Dr. S. Kunes, Dr. R. Dearborn and Dr. R. Cagan for generously providing *Drosophila* reagents. We also thank the Bloomington *Drosophila* stock center, the Vienna *Drosophila* RNAi Center and the TRiP at Harvard Medical School for providing fly stocks. We are grateful to Dr. S. Seshadri and the CHARGE consortium for sharing results of top-ranked, discovery-stage SNP associations from the published GWAS (4).

*Conflict of Interest statement.* None declared.

## FUNDING

This work was supported by the National Institutes of Health [K08AG034290, C06RR029965], the Burroughs Wellcome Fund [Career Award for Medical Scientists to J.M.S.], the Ellison Medical Foundation [to M.B.F.] and the Wellcome Trust [Grant 086451 to N.H.B.]. The TRiP at Harvard Medical School, which provided fly stocks, is supported by R01GM 084947.

## REFERENCES

1. Querfurth, H.W. and LaFerla, F.M. (2010) Alzheimer's disease. *N. Engl. J. Med.*, **362**, 329–344.
2. Spillantini, M.G. and Goedert, M. (2013) Tau pathology and neurodegeneration. *Lancet Neurol.*, **12**, 609–622.
3. Naj, A.C., Jun, G., Beecham, G.W., Wang, L.-S., Vardarajan, B.N., Buros, J., Gallins, P.J., Buxbaum, J.D., Jarvik, G.P., Crane, P.K. *et al.* (2011) Common variants at MS4A4/MS4A6E, CD2AP, CD33 and EPHA1 are associated with late-onset Alzheimer's disease. *Nat. Genet.*, **43**, 436–441.
4. Seshadri, S., Fitzpatrick, A.L., Ikram, M.A., DeStefano, A.L., Gudnason, V., Boada, M., Bis, J.C., Smith, A.V., Carrasquillo, M.M., Lambert, J.C. *et al.* (2010) Genome-wide analysis of genetic loci associated with Alzheimer disease. *JAMA*, **303**, 1832–1840.
5. Hollingworth, P., Harold, D., Sims, R., Gerrish, A., Lambert, J.-C., Carrasquillo, M.M., Abraham, R., Hamshere, M.L., Pahwa, J.S., Moskvin, V. *et al.* (2011) Common variants at ABCA7, MS4A6A/MS4A4E, EPHA1, CD33 and CD2AP are associated with Alzheimer's disease. *Nat. Genet.*, **43**, 429–435.
6. Lambert, J.-C., Ibrahim-Verbaas, C., Harold, D., Naj, A.C., Sims, R., Bellenguez, C., Jun, G., DeStefano, A.L., Bis, J.C., Beecham, G.W. *et al.* (2013) *Meta-analysis in More Than 74,000 Individuals Identifies 11 new Susceptibility Loci for Alzheimer's Disease*. Platform Presentation at the Alzheimer's Association International Conference, Boston, MA.
7. Shulman, J.M., Chen, K., Keenan, B.T., Chibnik, L.B., Fleisher, A.S., Thiyyagura, P., Rontiva, A., McCabe, C., Patsopoulos, N.A., Corneveaux, J. *et al.* (2013) Genetic susceptibility for Alzheimer's disease neuritic plaque pathology. *JAMA Neurol.*, **70**, 1150–1157.
8. Chibnik, L.B., Shulman, J.M., Leurgans, S.E., Schneider, J.A., Wilson, R.S., Tran, D., Aubin, C., Buchman, A.S., Heward, C.B., Myers, A.J. *et al.* (2011) CR1 is associated with amyloid plaque burden and age-related cognitive decline. *Ann. Neurol.*, **69**, 560–569.
9. Griuciu, A., Serrano-Pozo, A., Parrado, A.R., Lesinski, A.N., Asselin, C.N., Mullin, K., Hooli, B., Choi, S.H., Hyman, B.T. and Tanzi, R.E. (2013) Alzheimer's disease risk gene CD33 inhibits microglial uptake of amyloid beta. *Neuron*, **78**, 631–643.
10. Bradshaw, E.M., Chibnik, L.B., Keenan, B.T., Ottoboni, L., Raj, T., Tang, A., Rosenkrantz, L.L., Imboywa, S., Lee, M., Von Korff, A. *et al.* (2013) CD33 Alzheimer's disease locus: altered monocyte function and amyloid biology. *Nat. Neurosci.*, **16**, 848–850.
11. Cruchaga, C., Kauwe, J.S.K., Harari, O., Jin, S.C., Cai, Y., Karch, C.M., Benitez, B.A., Jeng, A.T., Skorupa, T., Carrell, D. *et al.* (2013) GWAS of cerebrospinal fluid Tau levels identifies risk variants for Alzheimer's disease. *Neuron*, **78**, 256–268.
12. Wittmann, C.W., Wszolek, M.F., Shulman, J.M., Salvaterra, P.M., Lewis, J., Hutton, M. and Feany, M.B. (2001) Tauopathy in *Drosophila*: neurodegeneration without neurofibrillary tangles. *Science*, **293**, 711–714.
13. Moloney, A., Sattelle, D.B., Lomas, D.A. and Crowther, D.C. (2009) Alzheimer's disease: insights from *Drosophila melanogaster* models. *Trends Biochem. Sci.*, **35**, 228–235.
14. Shulman, J.M. and Feany, M.B. (2003) Genetic modifiers of tauopathy in *Drosophila*. *Genetics*, **165**, 1233–1242.
15. Blard, O., Feuillette, S., Bou, J., Chaumette, B., Frébourg, T., Campion, D. and Lecourtis, M. (2007) Cytoskeleton proteins are modulators of mutant tau-induced neurodegeneration in *Drosophila*. *Hum. Mol. Genet.*, **16**, 555–566.
16. Ambegaokar, S.S. and Jackson, G.R. (2011) Functional genomic screen and network analysis reveal novel modifiers of tauopathy dissociated from tau phosphorylation. *Hum. Mol. Genet.*, **20**, 4947–4977.
17. Shulman, J.M., Chipendo, P., Chibnik, L.B., Aubin, C., Tran, D., Keenan, B.T., Kramer, P.L., Schneider, J.A., Bennett, D.A., Feany, M.B. *et al.* (2011) Functional screening of Alzheimer pathology genome-wide association signals in *Drosophila*. *Am. J. Hum. Genet.*, **88**, 232–238.
18. Chapuis, J., Hansmannel, F., Gistelink, M., Mounier, A., Van Cauwenberghe, C., Kolen, K.V., Geller, F., Sottejeau, Y., Harold, D., Dourlen, P. *et al.* Increased expression of BIN1 mediates Alzheimer genetic risk by modulating tau pathology. [epub ahead of print, February 12, 2013]. *Mol. Psychiatry*. doi:10.1038/mp.2013.1.
19. Seshadri, S., Fitzpatrick, A.L., Ikram, M.A., DeStefano, A.L., Gudnason, V., Boada, M., Bis, J.C., Smith, A.V., Carrasquillo, M.M., Lambert, J.C. *et al.* (2010) Genome-wide analysis of genetic loci associated with Alzheimer disease. *JAMA*, **303**, 1832–1840.

20. Yang, J., Benyamin, B., McEvoy, B.P., Gordon, S., Henders, A.K., Nyholt, D.R., Madden, P.A., Heath, A.C., Martin, N.G., Montgomery, G.W. *et al.* (2010) Common SNPs explain a large proportion of the heritability for human height. *Nat. Genet.*, **42**, 565–569.
21. International Schizophrenia Consortium Purcell, S.M., Wray, N.R., Stone, J.L., Visscher, P.M., O'donovan, M.C., Sullivan, P.F. and Sklar, P. (2009) Common polygenic variation contributes to risk of schizophrenia and bipolar disorder. *Nature*, **460**, 748–752.
22. Hu, Y., Flockhart, I., Vinayagam, A., Bergwitz, C., Berger, B., Perrimon, N. and Mohr, S.E. (2011) An integrative approach to ortholog prediction for disease-focused and other functional studies. *BMC Bioinformatics*, **12**, 357.
23. McQuilton, P., St Pierre, S.E. and Thurmond, J. and FlyBase Consortium (2012) Flybase 101 – the basics of navigating flyBase. *Nucleic Acids Res.*, **40**, D706–D714.
24. Dietzl, G., Chen, D., Schnorrer, F., Su, K.-C., Barinova, Y., Fellner, M., Gasser, B., Kinsey, K., Oettel, S., Scheiblauer, S. *et al.* (2007) A genome-wide transgenic RNAi library for conditional gene inactivation in *Drosophila*. *Nature*, **448**, 151–156.
25. Ni, J.-Q., Zhou, R., Czech, B., Liu, L.-P., Holderbaum, L., Yang-Zhou, D., Shim, H.-S., Tao, R., Handler, D., Karpowicz, P. *et al.* (2011) A genome-scale shRNA resource for transgenic RNAi in *Drosophila*. *Nat. Meth.*, **8**, 405–407.
26. Johnson, R.I., Seppa, M.J. and Cagan, R.L. (2008) The *Drosophila* CD2AP/CIN85 orthologue *cindr* regulates junctions and cytoskeleton dynamics during tissue patterning. *J. Cell Biol.*, **180**, 1191–1204.
27. Frazer, K., Ballinger, D., Cox, D., Hinds, D., Stuve, L., Gibbs, R., Belmont, J., Boudreau, A., Hardenbol, P., Leal, S. *et al.* (2007) A second generation human haplotype map of over 3.1 million SNPs. *Nature*, **449**, 851–861.
28. Bellen, H.J., Levis, R.W., He, Y., Carlson, J.W., Evans-Holm, M., Bae, E., Kim, J., Metaxakis, A., Savakis, C., Schulze, K.L. *et al.* (2011) The *Drosophila* gene disruption project: progress using transposons with distinctive site specificities. *Genetics*, **188**, 731–743.
29. Lai-Cheong, J.E., Parsons, M. and McGrath, J.A. (2010) The role of kindlins in cell biology and relevance to human disease. *Int. J. Biochem. Cell Biol.*, **42**, 595–603.
30. Wolf, G. and Stahl, R.A.K. (2003) CD2-associated Protein and glomerular disease. *Lancet*, **362**, 1746–1748.
31. Moser, M., Legate, K.R., Zent, R. and Fässler, R. (2009) The tail of integrins, talin, and kindlins. *Science*, **324**, 895–899.
32. Chiang, C.-K. and Inagi, R. (2010) Glomerular diseases: genetic causes and future therapeutics. *Nat. Rev. Nephrology*, **6**, 539–554.
33. Brabant, M.C., Fristrom, D., Bunch, T.A. and Brower, D.L. (1996) Distinct spatial and temporal functions for PS integrins during *Drosophila* wing morphogenesis. *Development*, **122**, 3307–3317.
34. Ioannidis, J.P.A., Thomas, G. and Daly, M.J. (2009) Validating, augmenting and refining genome-wide association signals. *Nat. Rev. Genet.*, **10**, 318–329.
35. Chagnon, M.J., Uetani, N. and Tremblay, M.L. (2004) Functional significance of the LAR receptor protein tyrosine phosphatase family in development and diseases. *Biochem. Cell Biol.*, **82**, 664–675.
36. Sarrazin, S., Lamanna, W.C. and Esko, J.D. (2011) Heparan sulfate proteoglycans. *Cold Spring Harb. Perspect. Biol.*, **3**, doi: 10.1101/cshperspect.a004952.
37. Zhang, B., Gaiteri, C., Bodea, L.-G., Wang, Z., McElwee, J., Podtelezniukov, A.A., Zhang, C., Xie, T., Tran, L., Dobrin, R. *et al.* (2013) Integrated systems approach identifies genetic nodes and networks in late-onset Alzheimer's disease. *Cell*, **153**, 707–720.
38. Fulga, T.A., Elson-Schwab, I., Khurana, V., Steinhilb, M.L., Spires, T.L., Hyman, B.T. and Feany, M.B. (2007) Abnormal bundling and accumulation of F-actin mediates tau-induced neuronal degeneration in vivo. *Nat. Cell Biol.*, **9**, 139–148.
39. DuBoff, B., Götz, J. and Feany, M.B. (2012) Tau promotes neurodegeneration via DRP1 mislocalization in vivo. *Neuron*, **75**, 618–632.
40. Lehtonen, S., Zhao, F. and Lehtonen, E. (2002) CD2-associated protein directly interacts with the actin cytoskeleton. *Am. J. Physiol. Renal Physiol.*, **283**, F734–F743.
41. Allen, M., Zou, F., Chai, H.S., Younkin, C.S., Crook, J., Pankratz, V.S., Carrasquillo, M.M., Rowley, C.N., Nair, A.A., Middha, S. *et al.* (2012) Novel late-onset Alzheimer disease loci variants associate with brain gene expression. *Neurology*, **79**, 221–228.
42. Purcell, S., Neale, B., Todd-Brown, K., Thomas, L., Ferreira, M., Bender, D., Maller, J., Sklar, P., de Bakker, P., Daly, M. *et al.* (2007) PLINK: a tool set for whole-genome association and population-based linkage analyses. *Am. J. Hum. Genet.*, **81**, 559–575.
43. Dearborn, R., He, Q., Kunes, S. and Dai, Y. (2002) Eph receptor tyrosine kinase-mediated formation of a topographic map in the *Drosophila* visual system. *J. Neurosci.*, **22**, 1338–1349.
44. Ueyama, M., Takemae, H., Ohmae, Y., Yoshida, H., Toyoda, H., Ueda, R. and Nishihara, S. (2008) Functional analysis of proteoglycan galactosyltransferase II RNA interference mutant flies. *J. Biol. Chem.*, **283**, 6076–6084.
45. Wada, A., Kato, K., Uwo, M.F., Yonemura, S. and Hayashi, S. (2007) Specialized extraembryonic cells connect embryonic and extraembryonic epidermis in response to Dpp during dorsal closure in *Drosophila*. *Dev. Biol.*, **301**, 340–349.
46. Gonsalvez, G.B., Rajendra, T.K., Wen, Y., Praveen, K. and Matera, A.G. (2010) Sm proteins specify germ cell fate by facilitating oskar mRNA localization. *Development*, **137**, 2341–2351.
47. Snee, M.J., Harrison, D., Yan, N. and Macdonald, P.M. (2007) A late phase of oskar accumulation is crucial for posterior patterning of the *Drosophila* embryo, and is blocked by ectopic expression of bruno. *Differentiation*, **75**, 246–255.
48. Krueger, N.X., Van Vactor, D.D., Wan, H.I., Gelbart, W.M., Goodman, C.S. and Saito, H. (1996) The transmembrane tyrosine phosphatase DLAR controls motor axon guidance in *Drosophila*. *Cell*, **84**, 12.